



INTRODUCING

PROSEO • LIGHTING

A COMPREHENSIVE PRODUCT GUIDE TO INNOVATIVE LIGHTING SOLUTIONS

GE is a trademark of General Electric Company. Used under trademark license.



GE light bulbs have illuminated homes with beautiful, reliable light for more than a century. We're harnessing this legacy and engineering prowess to create a new family of smart products designed specifically for professional installations.

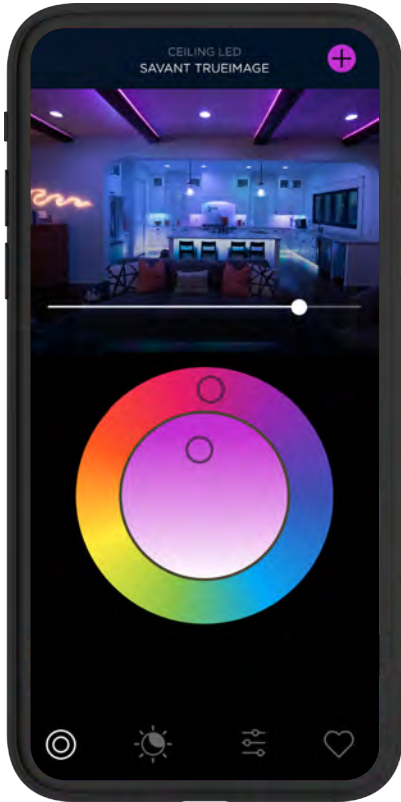
INTRODUCING PROSEO

An innovative assortment of smart lighting, shades and controllers that combine elegant style and simple installation. Proseo conveys high-end performance for 'trophy professionals' who sweat the details and are proud to show off their work.

Proseo natively integrates into the Savant app through the Savant Sage network, enabling installation flexibility for projects of all sizes and complexities. With enhanced reliability and stability plus speedy setup through RAD, Proseo offers a seamless installation and user experience.

DYNAMIC, INTELLIGENT LIGHTING





BEAUTIFUL AND ENERGY EFFICIENT,

Proseo Lighting enables the personalized ambiance traditional lighting can't replicate. The Savant app harnesses exceptional light quality and extraordinary flexibility to create the perfect vibe in any space.

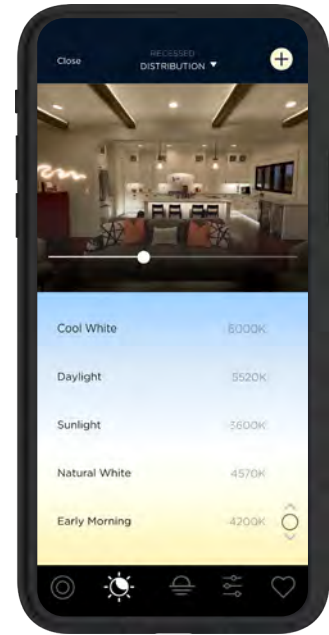
Proseo Lighting works together with the Savant app, keypads and dimmers to help minimize energy use—and control music, shades and climate—while putting your home in its best light. With a variety of adaptive lighting options available, you can transform any space at the touch of a button.

FULL COLOR CONTROL

The most intuitive interface for color control. Set the perfect mood, or just have fun experimenting with the possibilities.

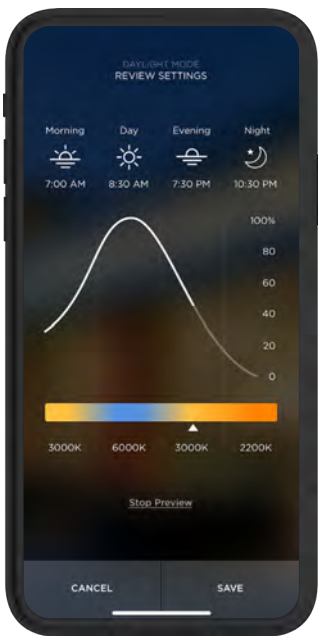
INTUITIVE AND ELEGANT LIGHTING CONTROL

Choose from millions of colors and white tones to set bright task lighting scenes for baking in the kitchen. Replicate calming candlelight in your yoga studio. Show off your team colors on game day with dynamic light effects. Or follow the sun and automatically change white light tones throughout the day using Daylight mode.



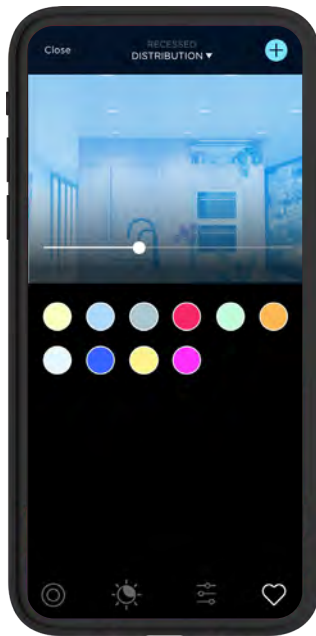
TUNABLE WHITES

Savant lighting technology allows you to choose color temperature values to dial in the just the right shade of white to match incandescent, candlelight or sunlight.



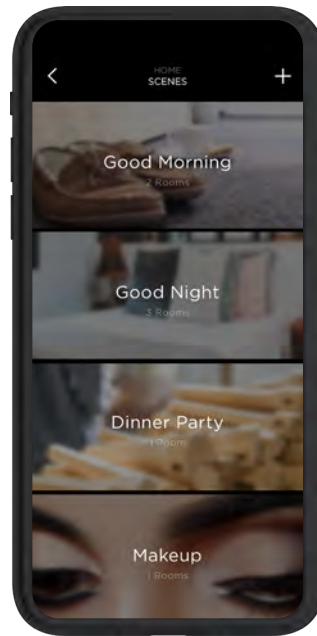
DAYLIGHT MODE

Daylight Mode allows you to personalize your circadian rhythms based on your home's geo-coordinates.



FAVORITES

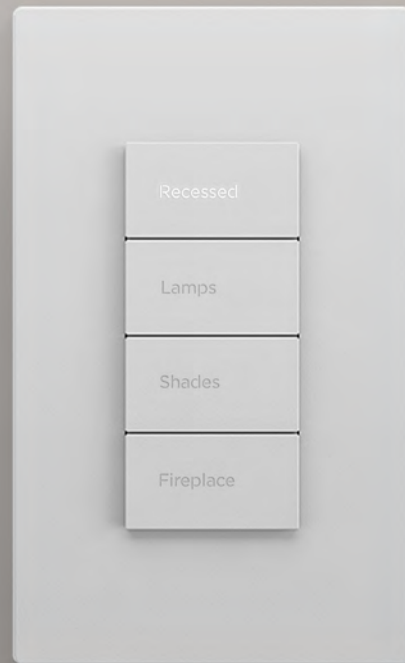
Easily save and recall your favorite light and color settings.



SCENES

Scenes are the perfect expression your personalized lighting. Create the perfect mood, save it and recall later with your app or a voice command.

KEYPADS AND DIMMERS





METROPOLITAN
Customizable Button Layouts
3 Finish Options



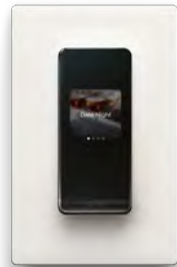
ECHO
Customizable Button Layouts
3 Finish Options



ASCEND
Customizable Button Layouts
9 Finish Options



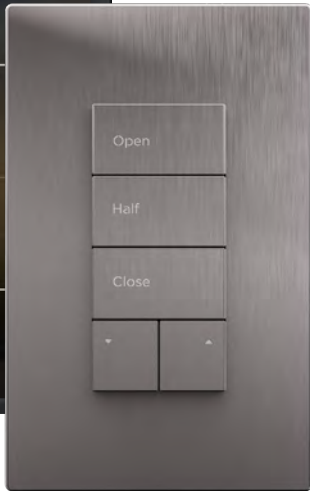
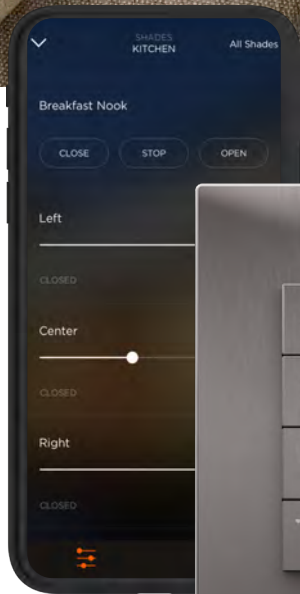
HOST ENABLED KEYPADS



NOON SMART SWITCHES & DIMMERS

INTELLIGENT SHADING





PROSEO SHADES

combine modern architectural aesthetics, performance fabrics and unmatched control interface options to complement any luxury space.

Shades can be shipped assembled and ready to install, or provided in custom, bespoke configurations, all with the same minimalist look.

Controlling natural and artificial lighting in perfect harmony has never been easier.

INTELLIGENT FIXTURES, STRIPS AND PLUGS



TRANSFORM RESIDENCES

with the sleek and modern design of our smart fixtures, light strips and plugs. Whether you're highlighting countertops or adding a warm, inviting glow, these smart fixtures deliver the perfect balance of style and performance. Elevate your space with lighting that works as beautifully as it looks.

SMART STRIPS



Dynamic Effects
Smart Indoor Light Strip
Full Color

SMART SHAPE LIGHTS



Dynamic Effects
Smart Outdoor Light Strip
Full Color



Dynamic Effects
Neon-Shape Smart Light
Full Color

SMART PLUGS



Cync Outdoor 2-Outlet
Smart Plug



Cync Indoor
Smart Plug

SMART FIXTURES



reveal HD+ Full Color
Wafer Smart LED Downlight
2, 4 & 6-Inch



reveal HD+ Full Color High Lu-
men
Wafer Smart LED Downlight
4 & 6-Inch



reveal HD+ Full Color Smart LED
Undercabinet Fixture
12, 18 & 24-Inch



reveal HD+ Full Color Smart LED
Undercabinet Puck
3-Inch





PANELIZED LIGHTING

The Proseo panelized system allows for infinite scalability, thus providing a smart, cost efficient way of managing whole home lighting control.

Compatible with all major electrical breaker panels, electricians can install with standard enclosures and high voltage wiring methods.

This standard, high voltage approach works seamlessly alongside all Proseo fixtures, accents and tunable lighting.



DUAL FORWARD PHASE DIMMER

Designed for use with loads that require forward phase dimming including Magnetic Low Voltage. Control capability for dimming two loads up to 300 VA or a single load at 600VA.



DUAL ADAPTIVE PHASE DIMMER

Designed for use with a variety of loads, with control capability for dimming two loads up to 500 VA.

Both Dimmers are compatible with either QO or Homeline style electrical panels and automatically report energy usage into the Savant Pro App for flexible load management.



DMX CONTROLLER

Savant's DMX Low Voltage Controllers allow for use of USAI Lighting's Infinite Color+ fixtures and Savant's pro grade light strips. Utilizing RDM setup could not be easier, which allows the controller to automatically discover all of the fixtures or strips on the channel.

KEY FEATURES

- Support for up to 32 fixtures or strips
- RDM support
- RJ45 DMX Connection (Wired Controller)
- Terminal Strip DMX/Power Connection (Wireless Keypad)



0-10V CONTROLLER

Savant's stand alone 0-10V Low Voltage Controllers pair perfectly with USAI Lighting fixtures allowing for both intensity control, as well as dual output options for Tunable White. 0-10V lighting provides superior dimming to traditional phase dimming using more traditional wiring.

KEY FEATURES

- 8 Outputs, up to 64 fixtures or a maximum of 8 fixtures per output
- Note that a max of 32 USAI Lighting color select, tunable white fixtures per controller



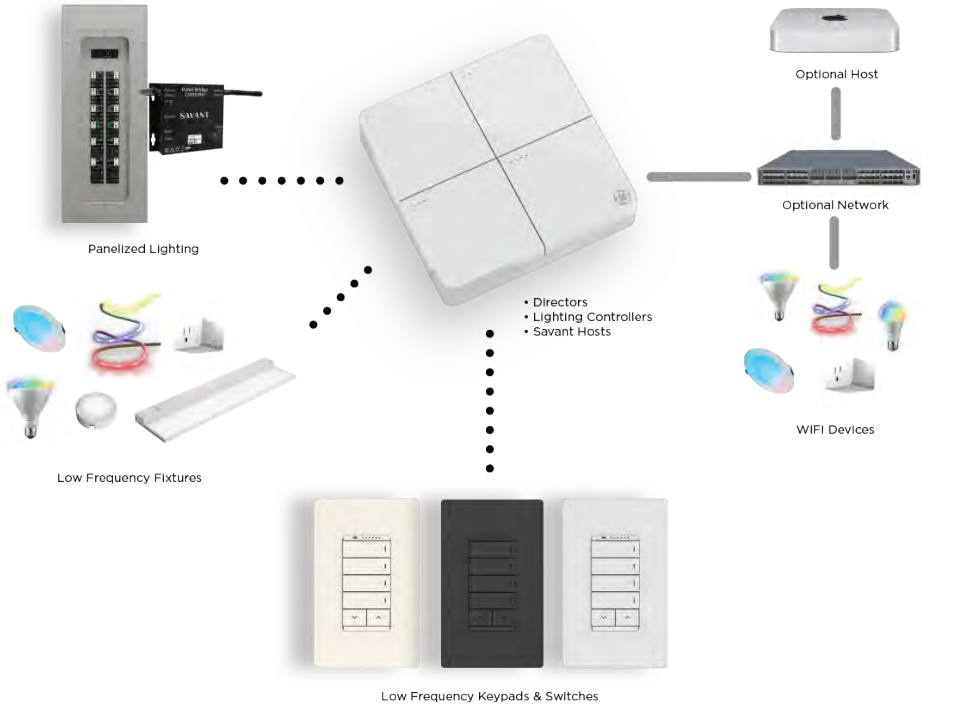
Savant's new proprietary, low frequency system allows for simple setup without the need of WIFI.

KEY FEATURES

- No Wi-Fi or IP Network required
 - Configuration and Control
- Low Frequency: Sub 1 GHz
- Deep Material Penetration
- Long distance (> 1 km)
- High Density - 1000+ Devices
- Standalone Architecture
- Low Power Consumption

LOW FREQUENCY

NETWORK





[savant.com](https://www.savant.com)