

# BIJOU COLLECTION



# THE BIJOU COLLECTION

## THE HISTORY OF BIJOU

The Bijou Collection is the culmination of years of archival designs from Belwith Keeler's rich legacy combined with new ideas. These pieces have been reimaged in exceptional, timeless finishes. This is not merely hardware—this is cabinet jewelry! Rigid lines that once separated the domains of fashion, art, interior design and architecture have long blurred. Home interiors inspired by fashion have come to the fore, driving trends and energizing designers and customers alike to rethink their space as a reflection of self. Unique, one-a-kind and






special. Our wardrobe is how we project ourselves into the world. Our spaces are a reflection of who we are, what we aspire to be and what we call, "home." Make it different, make it uniquely "you."

## DESIGNED IN-HOUSE, ALWAYS

Since 1893, Belwith Keeler has built a legacy of artistry and innovation in the hardware industry. Based in Michigan, our team of design professionals scout the latest styles from the furniture and interior design sphere and find inspiration from the latest fashion shows from New York to Milan.

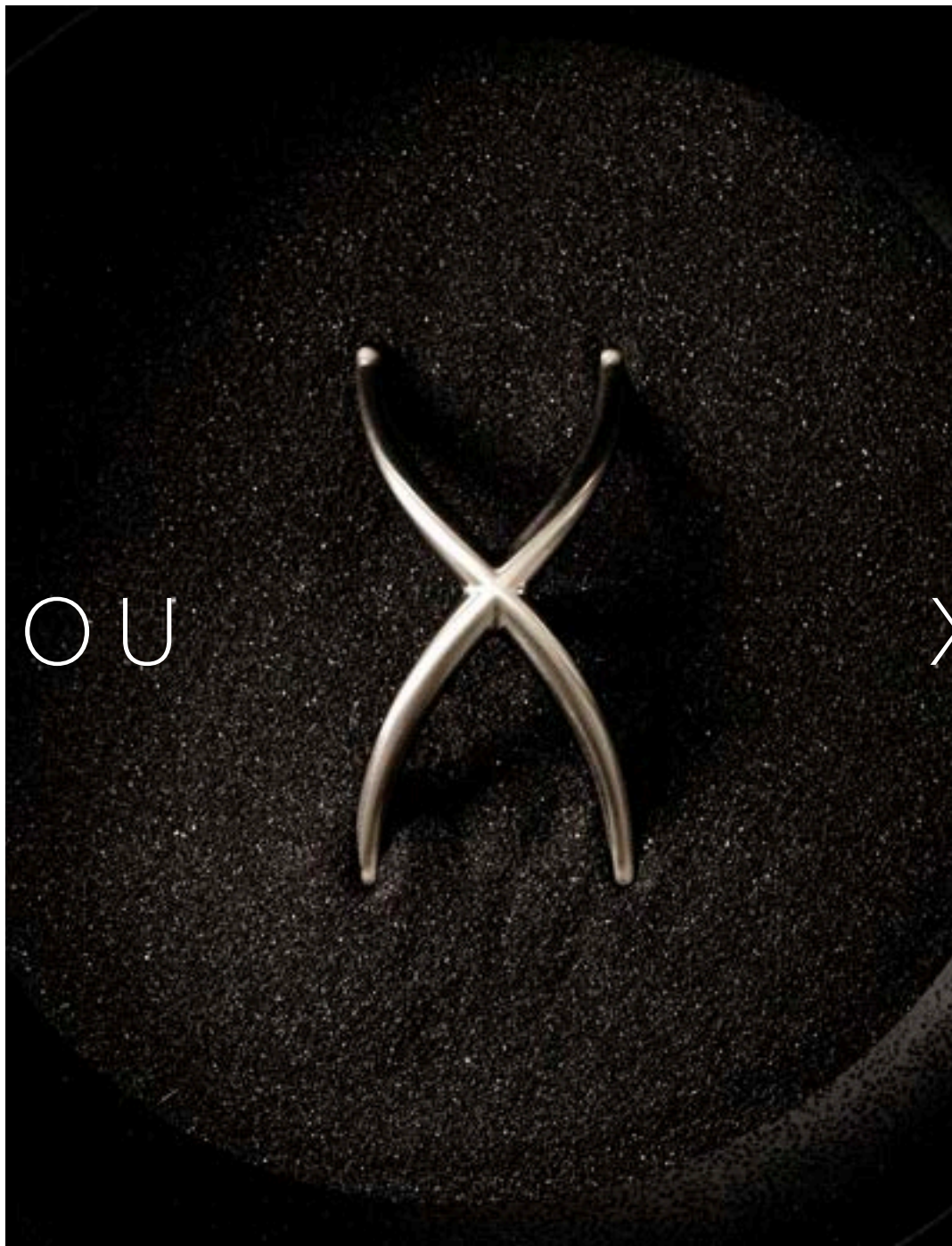
Our designers then re-imagine trending elements of shape and surface into fine hardware for your home, to bring you decorative pieces that are sensational: beautiful to behold and pleasurable to the touch. Our product undergoes intense scrutiny and rigorous finish testing from our master craftsmen and Quality Assurance teams. We check for quality, consistency, fit and finish. Only the very best are added into our living library of legacy design. Our promise is to continue to offer you the very finest.

# FIND US ONLINE

-  [belwithkeeler.com](http://belwithkeeler.com)
-  [@belwithkeeler](https://www.instagram.com/belwithkeeler)
-  [linkedin.com/company/belwith-keeler](https://www.linkedin.com/company/belwith-keeler)
-  [linktr.ee/bkdssalesteam](https://linktr.ee/bkdssalesteam)
-  [pinterest.com/belwithkeeler](https://www.pinterest.com/belwithkeeler)
-  [facebook.com/belwithkeeler](https://www.facebook.com/belwithkeeler)
-  [youtube.com/belwithkeelerdecorsolutions](https://www.youtube.com/belwithkeelerdecorsolutions)

BIJOU

X



BIJOU X

Satin Nickel | B079063-SN



AKOYA  
page 6



ASTORIA  
page 8



AURA  
page 12



BIJOU X  
page 14



CINCH  
page 16



DEW  
page 18



DUNE  
page 20



EMBER  
page 26



FRINGE  
page 28



GRATA  
page 30



JUNZI  
page 32



LAUREL  
page 34



LINEA  
page 36



LUMINESCENCE  
page 38



MEANDROS  
page 42



MINGLE  
page 44



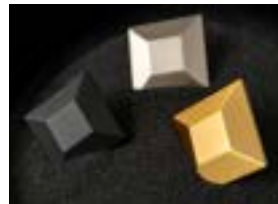
ODETTE  
page 46



OMNI  
page 48



PARAMOUNT  
page 50



POLLY  
page 52



PRECEDENT  
page 54



STESSO  
page 56



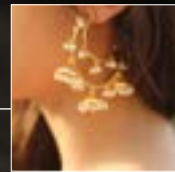
SYBIL  
page 58



TEMPEST  
page 60

# Akoya

---



effortless  
sophisticated  
timeless

Emulating the spherical forms of precious Akoya pearls, this dateless design encapsulates eternal simplicity.



SN | Satin Nickel



BGB | Brushed Golden Brass



MB | Matte Black



A

3/4" DIA.



B

3/4" DIA.



C

3/4" DIA.

	PART NO.	DESCRIPTION	DIMENSIONS
<b>A</b>	B052692-SN	KNOB	D: 3/4" P: 1" B: 9/16"
<b>B</b>	B052692-BGB	KNOB	D: 3/4" P: 1" B: 9/16"
<b>C</b>	B052692-MB	KNOB	D: 3/4" P: 1" B: 9/16"

# Astoria



classic  
luxe  
glamorous

Astoria style comes to life with undulating ridges on the knob, mock key, and ring pull, capturing light and attention. The timeless backplate pairs well with Astoria mock key or Laurel pendant pull, allowing you to mix and match finishes to showcase your personal style.



# Astoria

SATIN NICKEL



SN | Satin Nickel



BGB | Brushed Golden Brass



MB | Matte Black



A

1" SQ.



C

3-1/2" LENGTH



B

1-1/8" LENGTH



D

3-1/8" X 1-3/4"

	PART NO.	DESCRIPTION	DIMENSIONS
<b>A</b>	B056407-SN	KNOB	SQ: 1" P: 7/8" B: 1/2" SQ.
<b>B</b>	B056379-SN	MOCK KEY	L: 1-1/8" W: 5/8" P: 1"
<b>C</b>	B056380-SN	BACKPLATE	C/C: 1-1/2" L: 3-1/2" W: 7/8" P: 1/8"
<b>D</b>	B056405-SN	RING PULL	L: 3-1/8" W: 1-3/4" P: 1"

# Astoria

## BRUSHED GOLDEN BRASS



SN | Satin Nickel



BGB | Brushed Golden Brass



MB | Matte Black



A

1" SQ.



C

3-1/2" LENGTH



B

1-1/8" LENGTH



D

3-1/8" X 1-3/4"

	PART NO.	DESCRIPTION	DIMENSIONS
<b>A</b>	B056407-BGB	KNOB	SQ: 1" P: 7/8" B: 1/2" SQ.
<b>B</b>	B056379-BGB	MOCK KEY	L: 1-1/8" W: 5/8" P: 1"
<b>C</b>	B056380-BGB	BACKPLATE	C/C: 1-1/2" L: 3-1/2" W: 7/8" P: 1/8"
<b>D</b>	B056405-BGB	RING PULL	L: 3-1/8" W: 1-3/4" P: 1"

# Astoria

MATTE BLACK



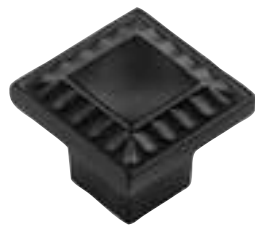
SN | Satin Nickel



BGB | Brushed Golden Brass



MB | Matte Black



A

1" SQ.



C

3-1/2" LENGTH



B

1-1/8" LENGTH



D

3-1/8" X 1-3/4"

	PART NO.	DESCRIPTION	DIMENSIONS
<b>A</b>	B056407-MB	KNOB	SQ: 1" P: 7/8" B: 1/2" SQ.
<b>B</b>	B056379-MB	MOCK KEY	L: 1-1/8" W: 5/8" P: 1"
<b>C</b>	B056380-MB	BACKPLATE	C/C: 1-1/2" L: 3-1/2" W: 7/8" P: 1/8"
<b>D</b>	B056405-MB	RING PULL	L: 3-1/8" W: 1-3/4" P: 1"

# Aura



ethereal  
luminous  
intrinsic

Born of igneous rock and geothermal aquatic environments, authentic crystal quartz gleam in the light. Individual spectral veins and natural bubbles come together to form an abstract pattern unique to every piece, Aura embraces the random formations of nature, while being grounded on a modern base.



14 | Polished Nickel



SN | Satin Nickel



BGB | Brushed Golden Brass



MB | Matte Black



A

2-3/4" LENGTH



C

2-3/4" LENGTH



B

2-3/4" LENGTH

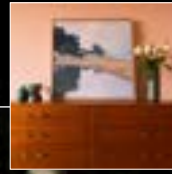


D

2-3/4" LENGTH

	PART NO.	DESCRIPTION	DIMENSIONS
<b>A</b>	B075512-14	T-KNOB	L: 2-3/4" W: 3/4" P: 1-5/16" B: 3/4"
<b>B</b>	B075512-SN	T-KNOB	L: 2-3/4" W: 3/4" P: 1-5/16" B: 3/4"
<b>C</b>	B075512-BGB	T-KNOB	L: 2-3/4" W: 3/4" P: 1-5/16" B: 3/4"
<b>D</b>	B075512-MB	T-KNOB	L: 2-3/4" W: 3/4" P: 1-5/16" B: 3/4"

# Bijou X



biomorphic  
fluid  
graceful

Pulled from company design archives dating back to 1953, this iconic mid-century modern knob has been reissued with an elegant, biomorphic aesthetic. The free-form movement of the Bijou X has evolved in contemporary finishing to suit today's styles.

# Bijou X

ALL FINISHES



SN | Satin Nickel



BGB | Brushed Golden Brass



MB | Matte Black



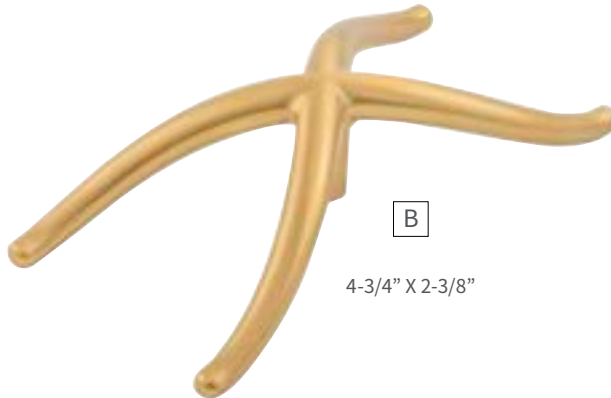
A

4-3/4" X 2-3/8"



C

4-3/4" X 2-3/8"



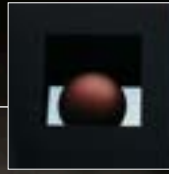
B

4-3/4" X 2-3/8"

	PART NO.	DESCRIPTION	DIMENSIONS
A	B079063-SN	KNOB	L: 4-3/4" W: 2-3/8" P: 1-1/8" B: 3/8"
B	B079063-BGB	KNOB	L: 4-3/4" W: 2-3/8" P: 1-1/8" B: 3/8"
C	B079063-MB	KNOB	L: 4-3/4" W: 2-3/8" P: 1-1/8" B: 3/8"

# Cinch

---



integrated  
simplistic  
understated

The icon of minimalist hardware, the lip pull category showcases a practical and restrained approach to outfitting cabinet door fronts. The polished and unobtrusive design of the Cinch pull acts as a supporting accent rather than overtaking the main event.





SN | Satin Nickel



BGB | Brushed Golden Brass



MB | Matte Black



A

1-1/2" C/C



B

1-1/2" C/C

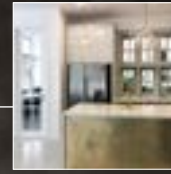
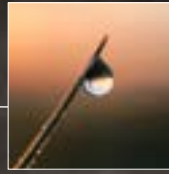


C

1-1/2" C/C

	PART NO.	DESCRIPTION	DIMENSIONS
<b>A</b>	B075003-SN	LIP PULL	C/C: 1-1/2" L: 2-1/2" W: 7/8" P: 2-1/4"
<b>B</b>	B075003-BGB	LIP PULL	C/C: 1-1/2" L: 2-1/2" W: 7/8" P: 2-1/4"
<b>C</b>	B075003-MB	LIP PULL	C/C: 1-1/2" L: 2-1/2" W: 7/8" P: 2-1/4"

# Dew



delicate  
pure  
sophisticated

In numerous mythologies, water represents life, power, grace and even chaos. Dew embodies the calming beauty of a falling raindrop, or cooled dew seated on a blade of grass. Personified in the form of descending liquid metal, Dew takes a divergent and original step away from and reimagines typical hardware, with softened forms reminiscent of nature.



14 | Polished Nickel



SN | Satin Nickel



BGB | Brushed Golden Brass



MB | Matte Black



**A** 2-1/2" LENGTH



**B** 2-1/2" LENGTH



**C** 2-1/2" LENGTH



**D** 2-1/2" LENGTH

	PART NO.	DESCRIPTION	DIMENSIONS
<b>A</b>	B051582-14	PENDANT PULL	L: 2-1/2" W: 1/2" P: 7/8" B: 5/8"
<b>B</b>	B051582-SN	PENDANT PULL	L: 2-1/2" W: 1/2" P: 7/8" B: 5/8"
<b>C</b>	B051582-BGB	PENDANT PULL	L: 2-1/2" W: 1/2" P: 7/8" B: 5/8"
<b>D</b>	B051582-MB	PENDANT PULL	L: 2-1/2" W: 1/2" P: 7/8" B: 5/8"

# Dune

---



moving  
expressive  
organic

Like a window into the meandering lines of the Sahara Desert, Dune captures a fleeting frame in time as relentless winds carve rippling patterns into the sand. An homage to the forces of nature, Dune combines graceful sweeping curves with a powerful sense of mass and scale.

# Dune

POLISHED NICKEL



14 | Polished Nickel



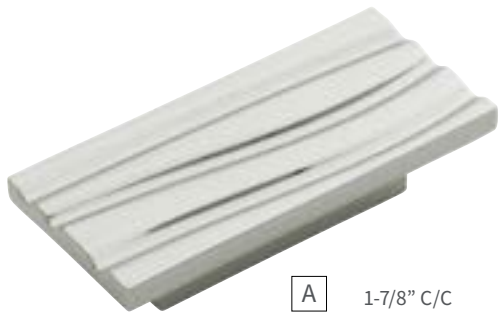
SN | Satin Nickel



BGB | Brushed Golden Brass



MB | Matte Black



**A** 1-7/8" C/C

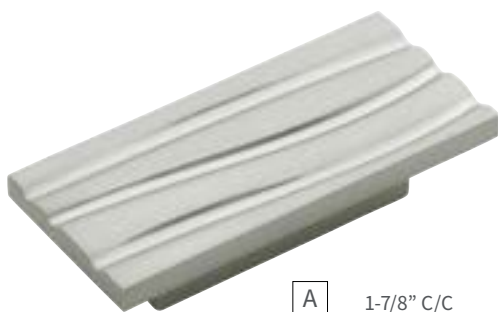
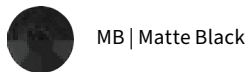
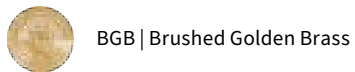


**B** 5-7/16" C/C

	PART NO.	DESCRIPTION	DIMENSIONS
<b>A</b>	B074961-14	PULL	C/C: 1-7/8" L: 3-1/4" W: 1-1/2" P: 3/4"
<b>B</b>	B074960-14	PULL	C/C: 5-7/16" L: 6-15/16" W: 3-1/4" P: 3/4"

# Dune

## SATIN NICKEL



**A** 1-7/8" C/C



**B** 5-7/16" C/C

	PART NO.	DESCRIPTION	DIMENSIONS
<b>A</b>	B074961-SN	PULL	C/C: 1-7/8" L: 3-1/4" W: 1-1/2" P: 3/4"
<b>B</b>	B074960-SN	PULL	C/C: 5-7/16" L: 6-15/16" W: 3-1/4" P: 3/4"

# Dune

BRUSHED GOLDEN BRASS



14 | Polished Nickel



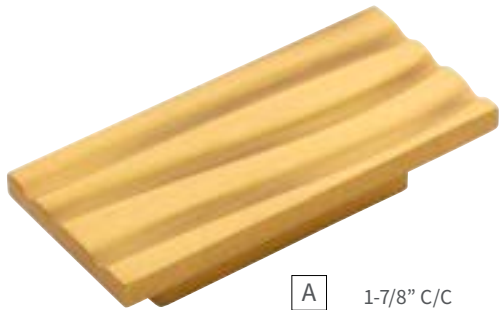
SN | Satin Nickel



BGB | Brushed Golden Brass



MB | Matte Black



**A** 1-7/8" C/C



**B** 5-7/16" C/C

	PART NO.	DESCRIPTION	DIMENSIONS
<b>A</b>	B074961-BGB	PULL	C/C: 1-7/8" L: 3-1/4" W: 1-1/2" P: 3/4"
<b>B</b>	B074960-BGB	PULL	C/C: 5-7/16" L: 6-15/16" W: 3-1/4" P: 3/4"

# Dune

## MATTE BLACK



14 | Polished Nickel



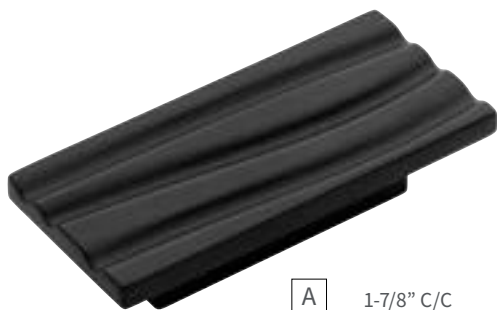
SN | Satin Nickel



BGB | Brushed Golden Brass



MB | Matte Black



**A** 1-7/8" C/C



**B** 5-7/16" C/C

	PART NO.	DESCRIPTION	DIMENSIONS
<b>A</b>	B074961-MB	PULL	C/C: 1-7/8" L: 3-1/4" W: 1-1/2" P: 3/4"
<b>B</b>	B074960-MB	PULL	C/C: 5-7/16" L: 6-15/16" W: 3-1/4" P: 3/4"





# Ember



modern  
rustic  
textural

With intricate textures emulating smoldering wood, the Ember pieces are both naturalistic and modern. Incorporating an architectural profile and minimalist bar pull creates tension and drama within the design. Rough vs. smooth, static vs. still, warm vs. cold.

# Ember

ALL FINISHES



SN | Satin Nickel



BGB | Brushed Golden Brass



MB | Matte Black



**A** 1" C/C



**D** 3" C/C



**B** 1" C/C



**E** 3" C/C



**C** 1" C/C



**F** 3" C/C

	PART NO.	DESCRIPTION	DIMENSIONS
<b>A</b>	B056428-SN	PULL	C/C: 1" L: 2-1/8" W: 1-1/2" P: 1-1/8"
<b>B</b>	B056428-BGB	PULL	C/C: 1" L: 2-1/8" W: 1-1/2" P: 1-1/8"
<b>C</b>	B056428-MB	PULL	C/C: 1" L: 2-1/8" W: 1-1/2" P: 1-1/8"
<b>D</b>	B056431-SN	PULL	C/C: 3" L: 4-1/8" W: 1-1/2" P: 1-1/8"
<b>E</b>	B056431-BGB	PULL	C/C: 3" L: 4-1/8" W: 1-1/2" P: 1-1/8"
<b>F</b>	B056431-MB	PULL	C/C: 3" L: 4-1/8" W: 1-1/2" P: 1-1/8"

# Fringe

---



acute  
edgy  
minimalistic

Slick, clean and precise, the Fringe lip pull is a minimalist modern design marked with angular features for a sharpened profile. With classic simplicity at its core, Fringe showcases all the hallmarks of practical minimalist design with a contemporary edge.

# Fringe

ALL FINISHES



SN | Satin Nickel



BGB | Brushed Golden Brass



MB | Matte Black



**A** 7/8" C/C



**C** 7/8" C/C



**B** 7/8" C/C

	PART NO.	DESCRIPTION	DIMENSIONS
<b>A</b>	B076559-SN	LIP PULL	C/C: 7/8" L: 1-3/4" W: 1-3/8" P: 1-3/4"
<b>B</b>	B076559-BGB	LIP PULL	C/C: 7/8" L: 1-3/4" W: 1-3/8" P: 1-3/4"
<b>C</b>	B076559-MB	LIP PULL	C/C: 7/8" L: 1-3/4" W: 1-3/8" P: 1-3/4"

# Grata



evocative  
bold  
tactile

Italian inspired with its elegantly curved and concave silhouette, the knurled textured surface of the Grata pull brings a contemporary industrial edginess; pointed geometry to what otherwise presents as sleek and round. It is at once classical and refined, but also modern.

# Grata

ALL FINISHES



SN | Satin Nickel



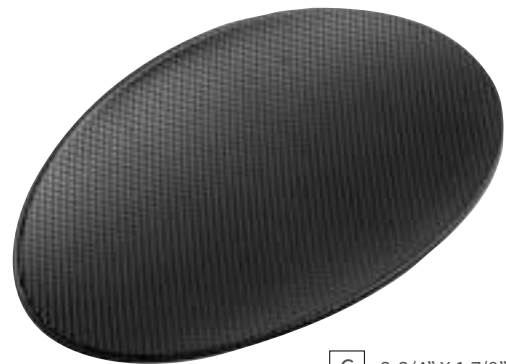
BGB | Brushed Golden Brass



MB | Matte Black



**A** 3-3/4" X 1-7/8"



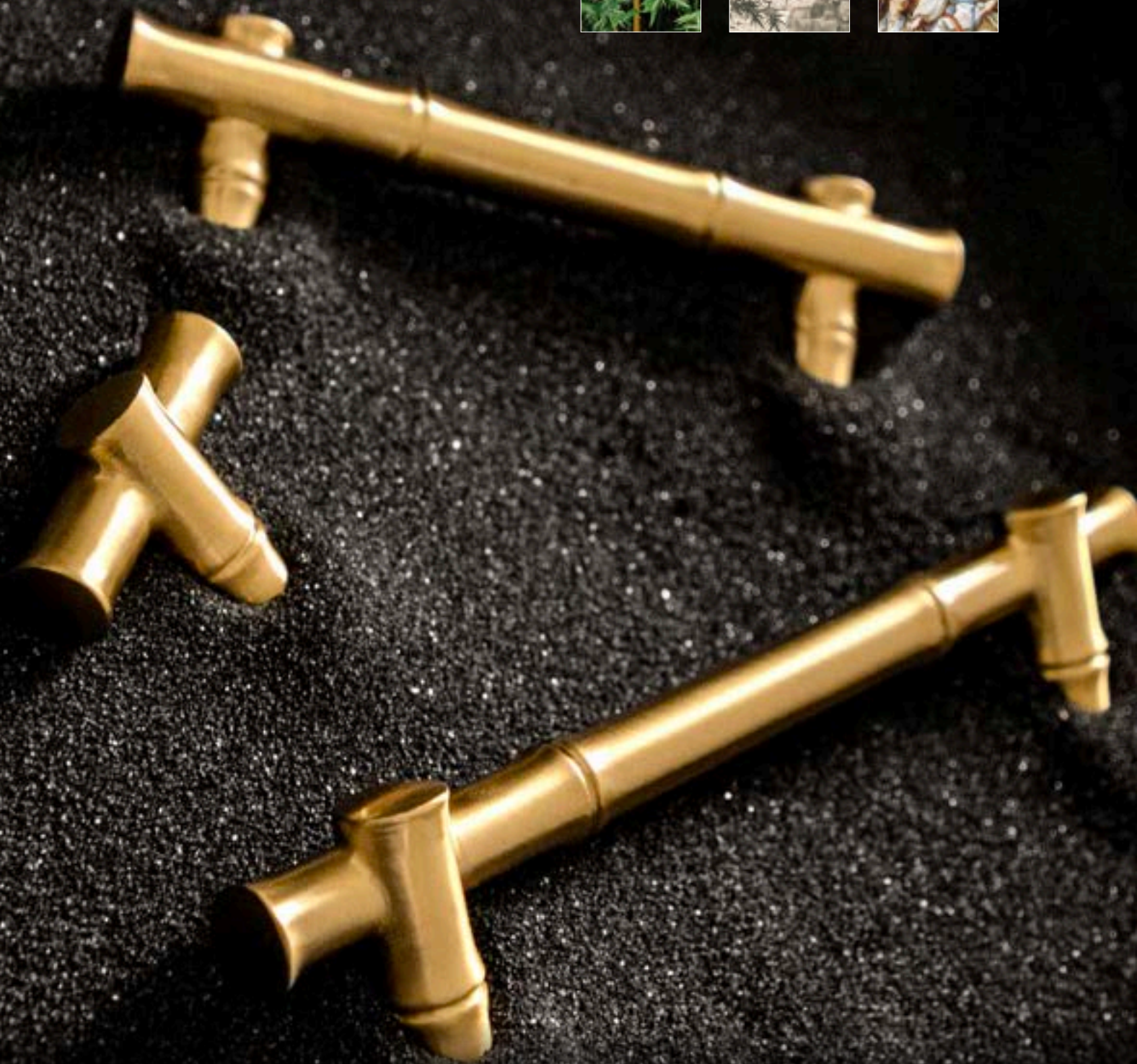
**C** 3-3/4" X 1-7/8"



**B** 3-3/4" X 1-7/8"

	PART NO.	DESCRIPTION	DIMENSIONS
<b>A</b>	B078768-SN	PULL	C/C: 15/16" L: 3-3/4" W: 1-7/8" P: 1-3/8"
<b>B</b>	B078768-BGB	PULL	C/C: 15/16" L: 3-3/4" W: 1-7/8" P: 1-3/8"
<b>C</b>	B078768-MB	PULL	C/C: 15/16" L: 3-3/4" W: 1-7/8" P: 1-3/8"

# Junzi



naturalistic  
instinctive  
visceral

Rooted in the popular Chinoiserie style of romanticized Chinese motifs, the Junzi collection is a transitional take on a traditional style. Stylized, yet natural.





04 | Satin Brass



**A** 1-15/16 x 5/8"

**B** 96mm C/C



**C** 128mm C/C



**D** 160mm C/C

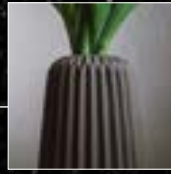


**E** 220mm C/C



	PART NO.	DESCRIPTION	DIMENSIONS
<b>A</b>	B056655-04	T-KNOB	L: 1-15/16" W: 5/8" P: 1-7/16" B: 1/2"
<b>B</b>	B056656-04	PULL	C/C: 96mm L: 5-3/8" W: 5/8" P: 1-7/16"
<b>C</b>	B056657-04	PULL	C/C: 128mm L: 6-3/4" W: 5/8" P: 1-7/16"
<b>D</b>	B056658-04	PULL	C/C: 160mm L: 8" W: 5/8" P: 1-7/16"
<b>E</b>	B056659-04	PULL	C/C: 220mm L: 10-7/16" W: 5/8" P: 1-7/16"

# Laurel



delicate  
chic  
lavish

The Laurel drop pendant is delicate and subtle, but strong on style. Swag-like folds and lively surface create ribbons of light that draw attention to whatever it adorns. Pair with the Astoria backplate for a more decidedly traditional look; mix and match finishes within your home to highlight your personal style.



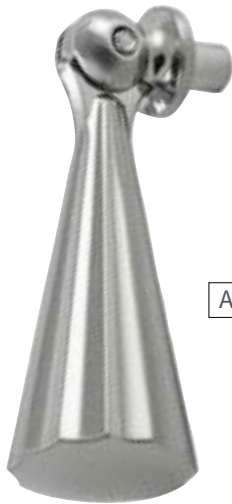
SN | Satin Nickel



BGB | Brushed Golden Brass



MB | Matte Black



**A** 2-7/16" X 7/8"



**C** 2-7/16" X 7/8"



**B** 2-7/16" X 7/8"



B056380-SN



B056380-BGB



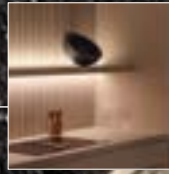
B056380-MB

### Compatible with Astoria Backplate

B056380 Dimensions: C/C: 1-1/2" L: 3-1/2" W: 7/8" P: 1/8"  
See more details on pg. 6-9

	PART NO.	DESCRIPTION	DIMENSIONS
<b>A</b>	B050038-SN	PENDANT PULL	L: 2-7/16" W: 7/8" P: 1-1/16" B: 1/2"
<b>B</b>	B050038-BGB	PENDANT PULL	L: 2-7/16" W: 7/8" P: 1-1/16" B: 1/2"
<b>C</b>	B050038-MB	PENDANT PULL	L: 2-7/16" W: 7/8" P: 1-1/16" B: 1/2"

# Linea



striking  
versatile  
structural

With fine linear ridges and softened angular folding, the Linea design offers a minimal aesthetic that is clean and beautiful. Combined with the hidden ergonomics of a comfortable grip, it makes for a natural fixture for any contemporary space.



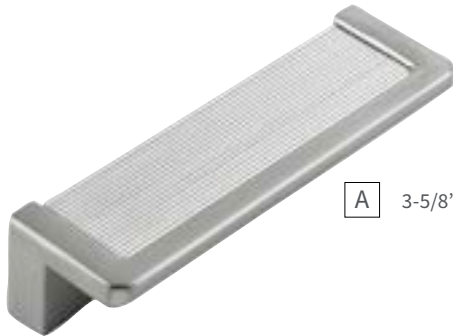
SN | Satin Nickel



BGB | Brushed Golden Brass



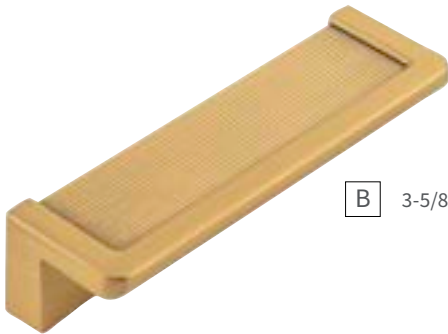
MB | Matte Black



**A** 3-5/8" LENGTH



**D** 5-1/8" LENGTH



**B** 3-5/8" LENGTH



**E** 5-1/8" LENGTH



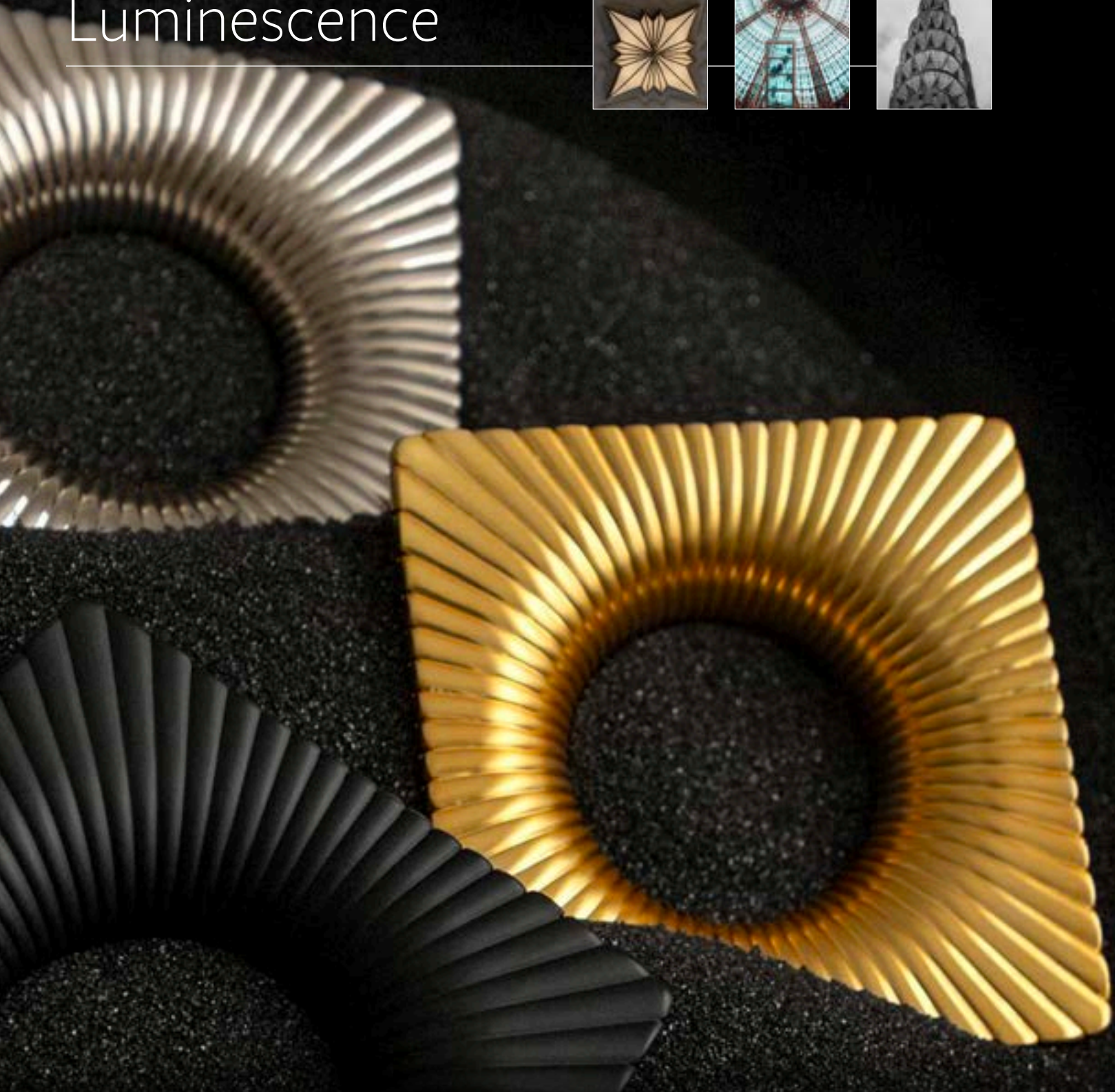
**C** 3-5/8" LENGTH



**F** 5-1/8" LENGTH

	PART NO.	DESCRIPTION	DIMENSIONS
<b>A</b>	B056060-SN	PULL	C/C: 3" L: 3-5/8" W: 1-1/8" P: 13/16"
<b>B</b>	B056060-BGB	PULL	C/C: 3" L: 3-5/8" W: 1-1/8" P: 13/16"
<b>C</b>	B056060-MB	PULL	C/C: 3" L: 3-5/8" W: 1-1/8" P: 13/16"
<b>D</b>	B056013-SN	PULL	C/C: 3" L: 5-1/8" W: 1-1/8" P: 7/8"
<b>E</b>	B056013-BGB	PULL	C/C: 3" L: 5-1/8" W: 1-1/8" P: 7/8"
<b>F</b>	B056013-MB	PULL	C/C: 3" L: 5-1/8" W: 1-1/8" P: 7/8"

# Luminescence



splendor  
brilliance  
stately

A sumptuous lavish linear pattern radiates from the center, capturing light beautifully off every curve. Reminiscent of Art Deco sunburst motifs, the Luminescence pulls are a captivating blend of symmetry, repetition and geometry.

# Luminescence

ALL FINISHES



SN | Satin Nickel



BGB | Brushed Golden Brass



MB | Matte Black



**B** 2-1/4" C/C



**A** 2-1/4" C/C



**C** 2-1/4" C/C

	PART NO.	DESCRIPTION	DIMENSIONS
<b>A</b>	B076104-SN	PULL	C/C: 2-1/4" L: 3-13/16" W: 3-13/16" P: 3/4"
<b>B</b>	B076104-BGB	PULL	C/C: 2-1/4" L: 3-13/16" W: 3-13/16" P: 3/4"
<b>C</b>	B076104-MB	PULL	C/C: 2-1/4" L: 3-13/16" W: 3-13/16" P: 3/4"

# Luminescence

## ALL FINISHES



SN | Satin Nickel



BGB | Brushed Golden Brass



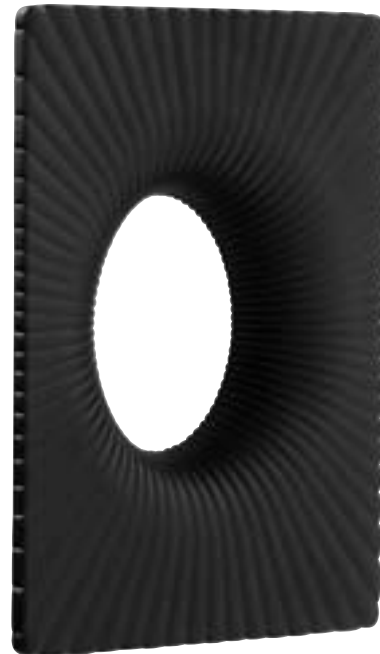
MB | Matte Black



**A** 2-3/4" C/C



**B** 2-3/4" C/C



**C** 2-3/4" C/C

	PART NO.	DESCRIPTION	DIMENSIONS
<b>A</b>	B076105-SN	PULL	C/C: 2-3/4" L: 5-1/4" W: 3-13/16" P: 3/4"
<b>B</b>	B076105-BGB	PULL	C/C: 2-3/4" L: 5-1/4" W: 3-13/16" P: 3/4"
<b>C</b>	B076105-MB	PULL	C/C: 2-3/4" L: 5-1/4" W: 3-13/16" P: 3/4"





# Meandros

---



unity  
eternity  
fluidity

A design unabashedly inspired by the Greek key, it symbolizes eternal motion and the bonds of life and love. A distinct pattern that has become a staple in textiles and furnishings.

# Meandros

ALL FINISHES



SN | Satin Nickel



BGB | Brushed Golden Brass



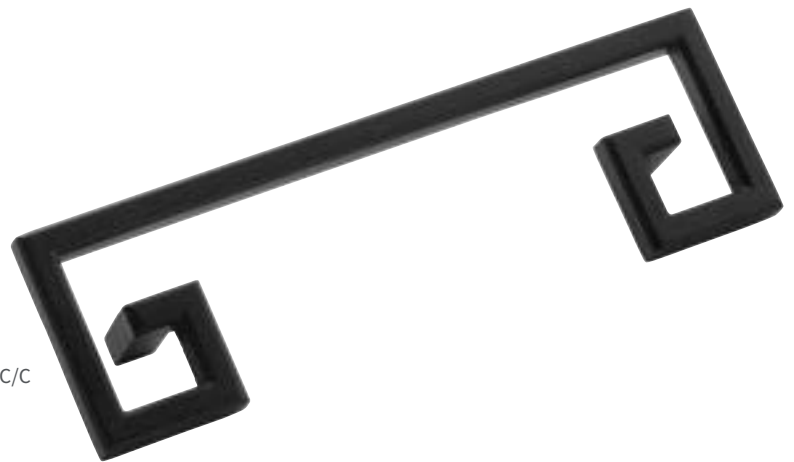
MB | Matte Black



**A** 4-1/16" C/C



**B** 4-1/16" C/C



**C** 4-1/16" C/C

	PART NO.	DESCRIPTION	DIMENSIONS
<b>A</b>	B076346-SN	PULL	C/C: 4-1/16" L: 5-1/2" W: 1-11/16" P: 13/16"
<b>B</b>	B076346-BGB	PULL	C/C: 4-1/16" L: 5-1/2" W: 1-11/16" P: 13/16"
<b>C</b>	B076346-MB	PULL	C/C: 4-1/16" L: 5-1/2" W: 1-11/16" P: 13/16"

# Mingle

---



oneness  
harmony  
continuity

A representation of sacred geometry, the circle is a universal ancient symbol representing unity, perfection, and wholeness. Two rings combine to present a timeless classy design.

# Mingle

ALL FINISHES



SN | Satin Nickel



BGB | Brushed Golden Brass



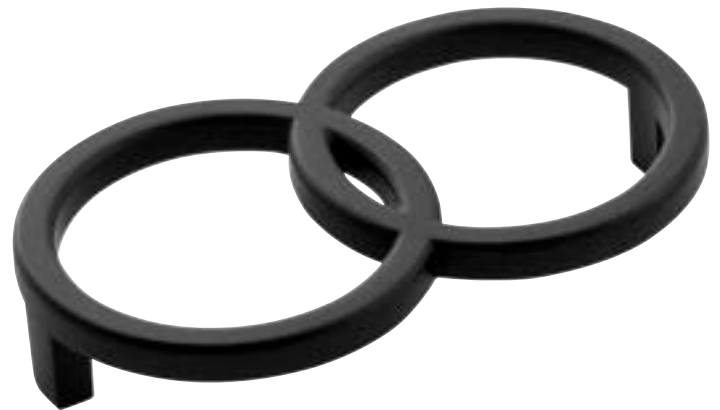
MB | Matte Black



**A** 4-1/16" C/C



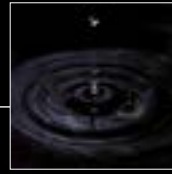
**B** 4-1/16" C/C



**C** 4-1/16" C/C

	PART NO.	DESCRIPTION	DIMENSIONS
<b>A</b>	B076344-SN	PULL	C/C: 4-1/16" L: 4-5/16" W: 2-1/2" P: 13/16"
<b>B</b>	B076344-BGB	PULL	C/C: 4-1/16" L: 4-5/16" W: 2-1/2" P: 13/16"
<b>C</b>	B076344-MB	PULL	C/C: 4-1/16" L: 4-5/16" W: 2-1/2" P: 13/16"

# Odette



mid-mod  
whimsical  
relaxed

Odette captures the whimsy of the mid-century modern period. This fixed ring pull has an open airy feel with formal throwback flair.

# Odette

ALL FINISHES



SN | Satin Nickel



BGB | Brushed Golden Brass



MB | Matte Black



	PART NO.	DESCRIPTION	DIMENSIONS
A	B075393-SN	RING PULL	C/C: 2-1/4" L: 2-3/4" W: 2-5/8" P: 15/16"
B	B075393-BGB	RING PULL	C/C: 2-1/4" L: 2-3/4" W: 2-5/8" P: 15/16"
C	B075393-MB	RING PULL	C/C: 2-1/4" L: 2-3/4" W: 2-5/8" P: 15/16"

# Omni



rhythmic  
balanced  
elemental

Earthy and organic, Omni's directional lines combine primitive structure and texture with modern design. Cast in solid brass, Omni is full of heritage and depth.





SN | Satin Nickel



BGB | Brushed Golden Brass



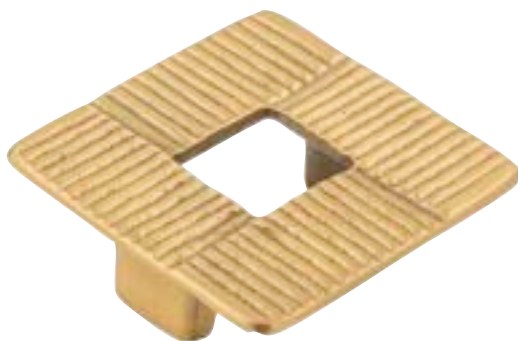
MB | Matte Black



**A** 1-3/4" C/C



**C** 1-3/4" C/C



**B** 1-3/4" C/C

	PART NO.	DESCRIPTION	DIMENSIONS
<b>A</b>	B049825-SN	PULL	C/C: 1-3/4" L: 2-1/2" W: 2-1/2" P: 13/16"
<b>B</b>	B049825-BGB	PULL	C/C: 1-3/4" L: 2-1/2" W: 2-1/2" P: 13/16"
<b>C</b>	B049825-MB	PULL	C/C: 1-3/4" L: 2-1/2" W: 2-1/2" P: 13/16"

# Paramount

---



maximalist  
sublime  
opulent

Stately, impressive and imposing, the lengthy Paramount pull is a showstopping design featuring translucent acrylic, suspended from refined elegant posts and finished with gently flared endcaps. Paramount's audacious scale makes for a head-turning statement.

# Paramount

ALL FINISHES



CASN | Clear Acrylic with Satin Nickel



CABGB | Clear Acrylic with Brushed Golden Brass



CAMB | Clear Acrylic with Matte Black



BASN | Black Acrylic with Satin Nickel

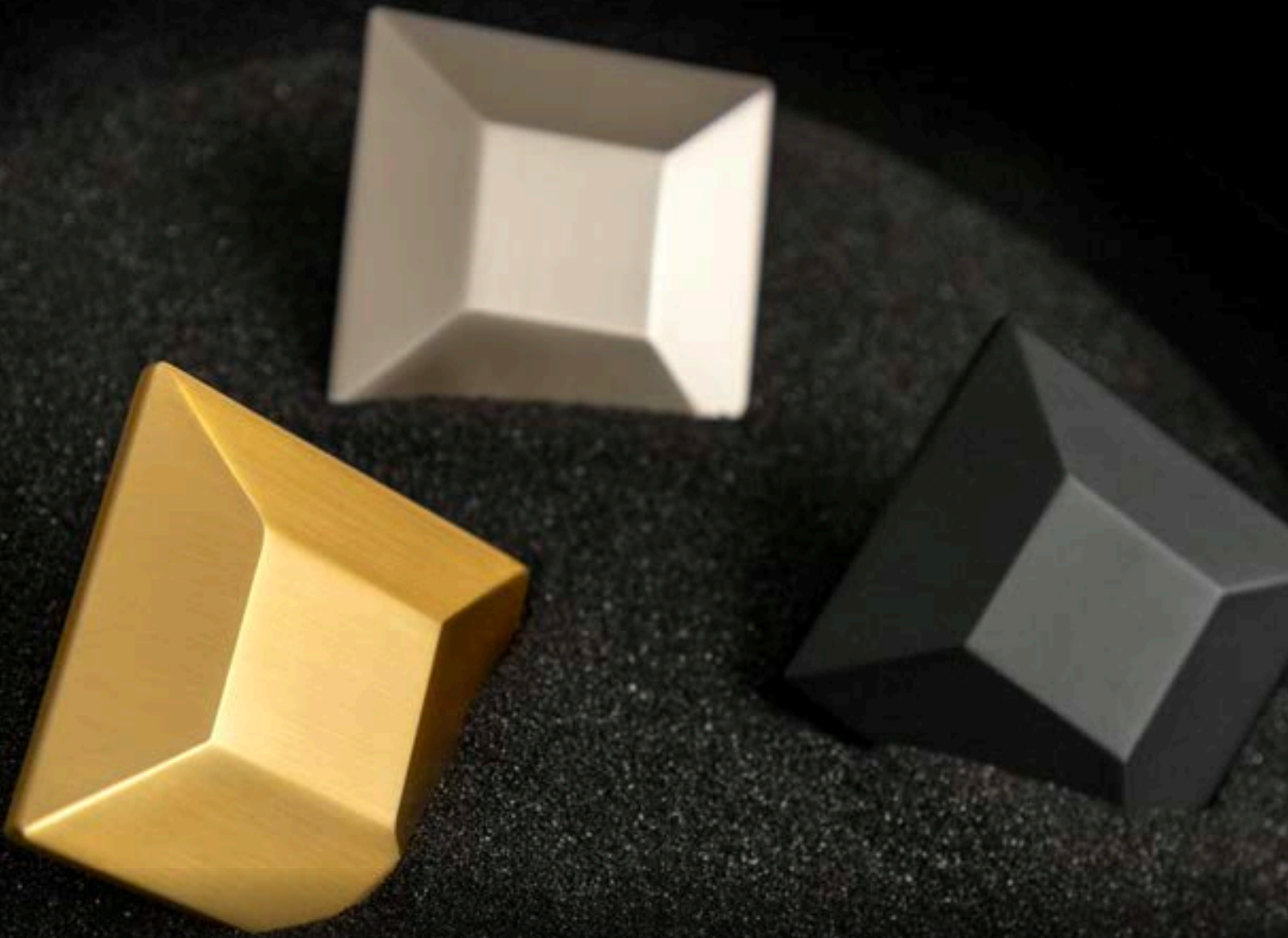
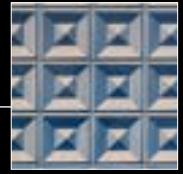


TRBGB | Tortoiseshell Acrylic with Brushed Golden Brass



	PART NO.	DESCRIPTION	DIMENSIONS
<b>A</b>	B077011-CASN	PULL	C/C: 27-1/8" L: 32-3/16" W: 1-5/16" P: 2"
<b>B</b>	B077011-CABGB	PULL	C/C: 27-1/8" L: 32-3/16" W: 1-5/16" P: 2"
<b>C</b>	B077011-CAMB	PULL	C/C: 27-1/8" L: 32-3/16" W: 1-5/16" P: 2"
<b>D</b>	B077011-BASN	PULL	C/C: 27-1/8" L: 32-3/16" W: 1-5/16" P: 2"
<b>E</b>	B077011-TRBGB	PULL	C/C: 27-1/8" L: 32-3/16" W: 1-5/16" P: 2"

# Polly



cosmopolitan  
grand  
palatial

The Polly knob presents a dimensional geometric silhouette that is at once understated yet daring. Like a baguette cut gemstone, its simple geometry creates wide faceted planes primed for capturing just a hint of light.



SN | Satin Nickel



BGB | Brushed Golden Brass



MB | Matte Black



**A** 2-3/4" SQ.



**B** 2-3/4" SQ.

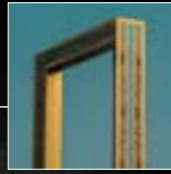


**C** 2-3/4" SQ.

	PART NO.	DESCRIPTION	DIMENSIONS
<b>A</b>	B076558-SN	KNOB	SQ: 2-3/4" P: 1-3/8" B: 1-5/16"
<b>B</b>	B076558-BGB	KNOB	SQ: 2-3/4" P: 1-3/8" B: 1-5/16"
<b>C</b>	B076558-MB	KNOB	SQ: 2-3/4" P: 1-3/8" B: 1-5/16"

# Precedent

---



uniformity  
stability  
balance

The foundation of many designs, the rectangular form strikes a balance with familiarity and security. With its innate basal shape, Precedent represents a strong structural attitude with a sense of permanence.

# Precedent

ALL FINISHES



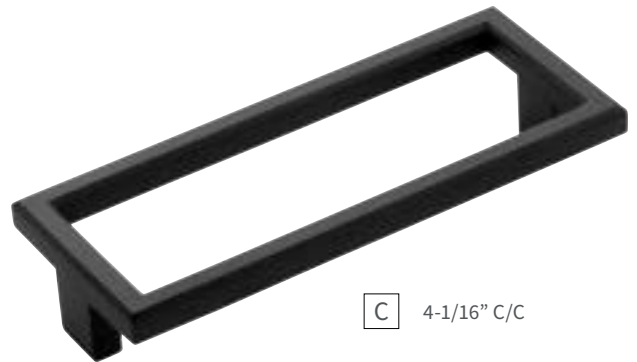
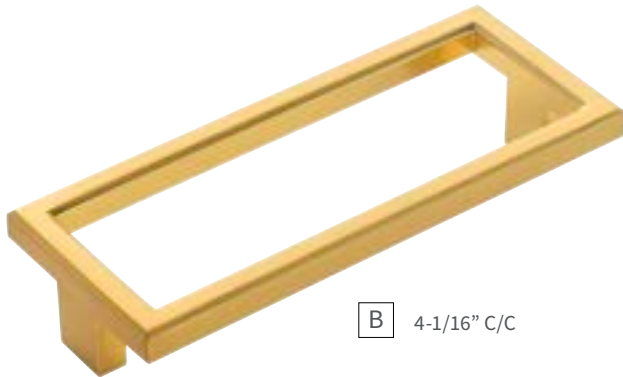
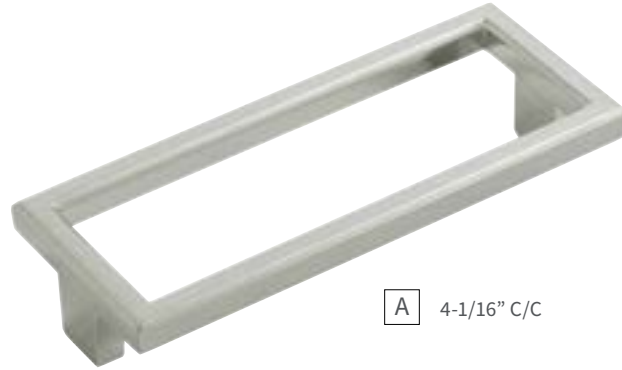
SN | Satin Nickel



BGB | Brushed Golden Brass



MB | Matte Black



	PART NO.	DESCRIPTION	DIMENSIONS
A	B076345-SN	PULL	C/C: 4-1/16" L: 4-5/16" W: 1-3/4" P: 13/16"
B	B076345-BGB	PULL	C/C: 4-1/16" L: 4-5/16" W: 1-3/4" P: 13/16"
C	B076345-MB	PULL	C/C: 4-1/16" L: 4-5/16" W: 1-3/4" P: 13/16"

# Stesso

---



modern  
linear  
bold

Strong and rigid architectural lines are juxtaposed with slight angles. This minimal design emphasizes structural elements over decorative design. Robust and gallant, utilize Stesso as a stand-alone piece or paired as door cabinet accents.





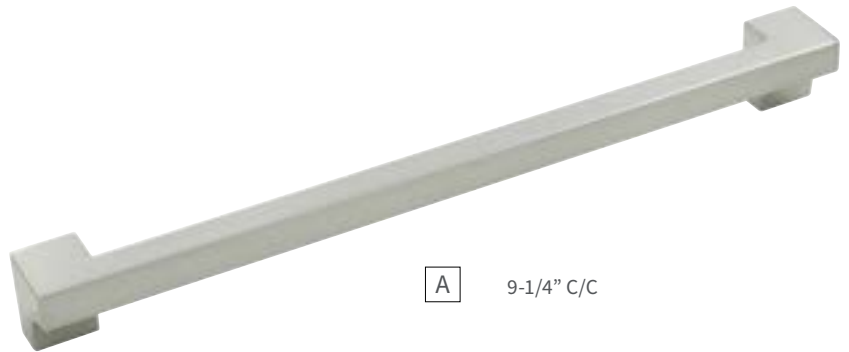
SN | Satin Nickel



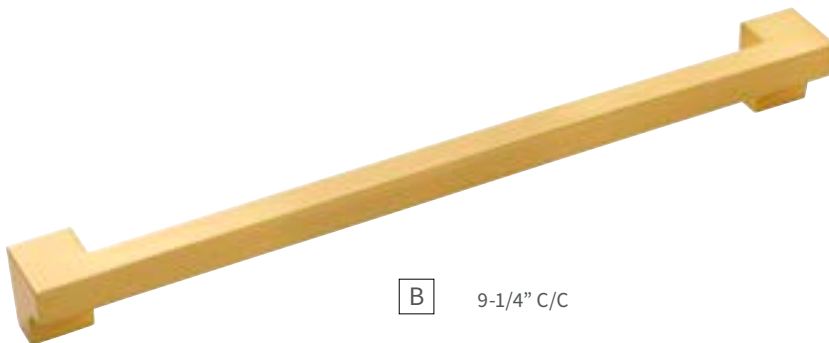
BGB | Brushed Golden Brass



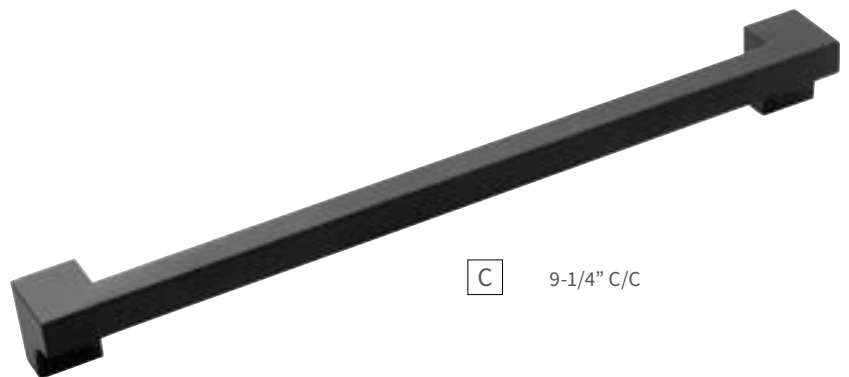
MB | Matte Black



**A** 9-1/4" C/C



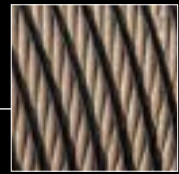
**B** 9-1/4" C/C



**C** 9-1/4" C/C

	PART NO.	DESCRIPTION	DIMENSIONS
<b>A</b>	B074601-SN	PULL	C/C: 9-1/4" L: 10" W: 1-1/16" P: 1-1/16"
<b>B</b>	B074601-BGB	PULL	C/C: 9-1/4" L: 10" W: 1-1/16" P: 1-1/16"
<b>C</b>	B074601-MB	PULL	C/C: 9-1/4" L: 10" W: 1-1/16" P: 1-1/16"

# Sybil



timeless  
sculptural  
intricate

Sybil is a timeless, intricate ring pull featuring seamless ridges and twists. Designed to be both elegant and ergonomic. Inspired by David Yurman's first "Cable Bracelet" and for whom it was designed, his love Sybil.



SN | Satin Nickel



BGB | Brushed Golden Brass



MB | Matte Black



**A** 2-7/8" X 2-3/4"



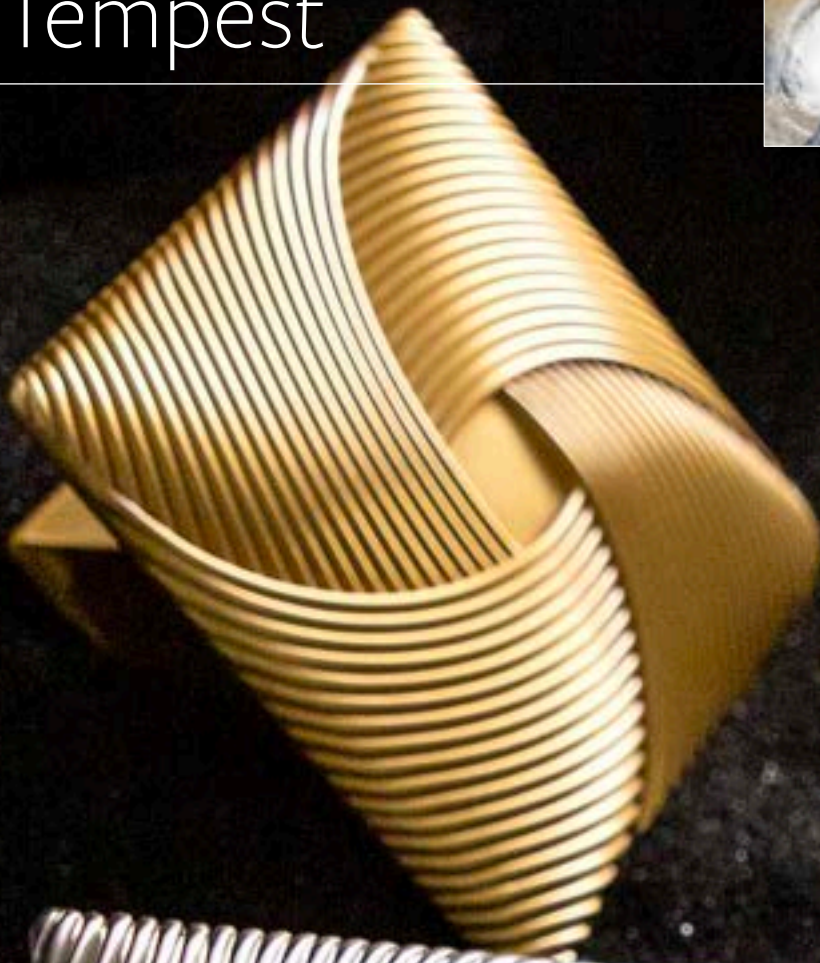
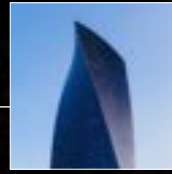
**C** 2-7/8" X 2-3/4"



**B** 2-7/8" X 2-3/4"

	PART NO.	DESCRIPTION	DIMENSIONS
<b>A</b>	B076986-SN	RING PULL	L: 2-7/8" W: 2-3/4" P: 3/4" B: 5/8" x 9/16"
<b>B</b>	B076986-BGB	RING PULL	L: 2-7/8" W: 2-3/4" P: 3/4" B: 5/8" x 9/16"
<b>C</b>	B076986-MB	RING PULL	L: 2-7/8" W: 2-3/4" P: 3/4" B: 5/8" x 9/16"

# Tempest



brazen  
fanciful  
dramatic

Bold lines swirl about its center in cyclonic fashion; mesmerizing movement and sheer presence is captured directly within the design. Brimming with personality, this oversized Tempest statement knob becomes the dramatic center of attention.

# Tempest

ALL FINISHES



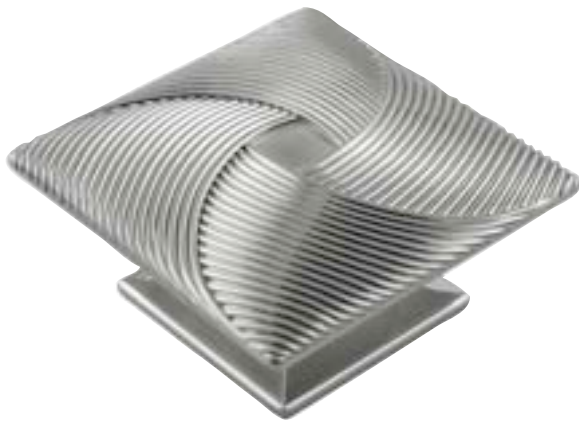
SN | Satin Nickel



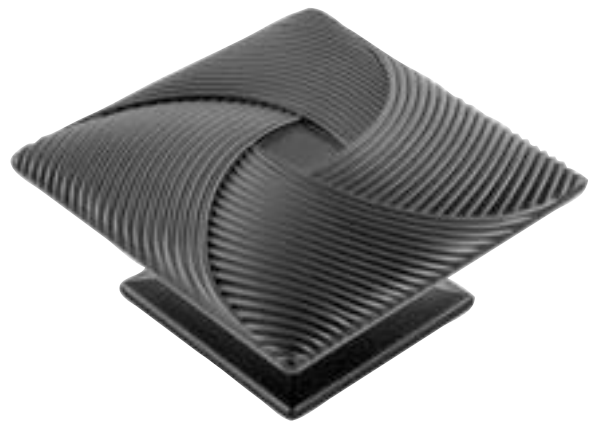
BGB | Brushed Golden Brass



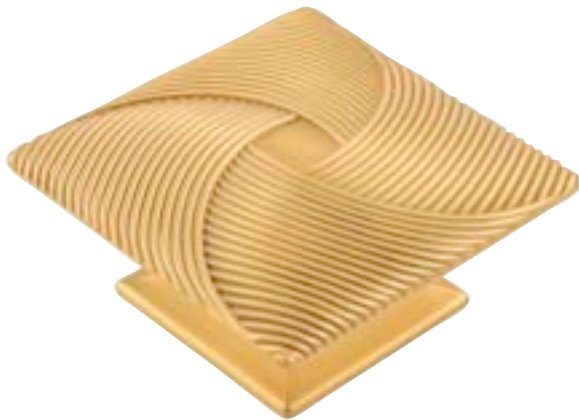
MB | Matte Black



**A** 3-1/2" SQ.



**C** 3-1/2" SQ.



**B** 3-1/2" SQ.

	PART NO.	DESCRIPTION	DIMENSIONS
<b>A</b>	B057801-SN	KNOB	SQ: 3-1/2" C/C: 3/4" P: 1-3/4" B: 2-1/4" SQ.
<b>B</b>	B057801-BGB	KNOB	SQ: 3-1/2" C/C: 3/4" P: 1-3/4" B: 2-1/4" SQ.
<b>C</b>	B057801-MB	KNOB	SQ: 3-1/2" C/C: 3/4" P: 1-3/4" B: 2-1/4" SQ.

BIJOU COLLECTION

# GALLERY



A K O Y A

Satin Nickel | B052692-SN





## ASTORIA

All Finishes | B056407-SN | B056407-BGB | B056407-MB



## A U R A

Brushed Golden Brass | B075512-BGB



## BIJOU X

Satin Nickel | B079063-SN



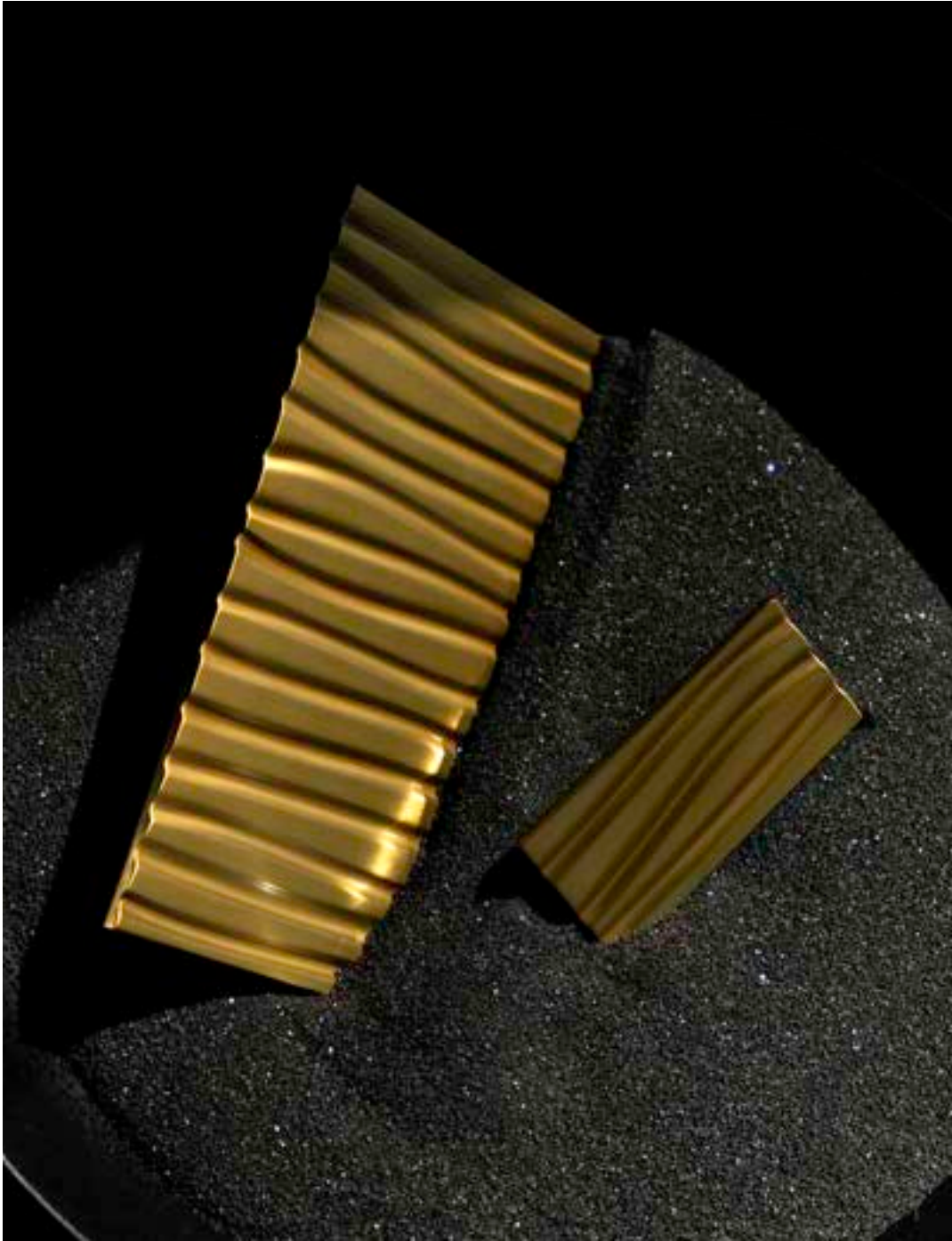
## CINCH

Brushed Golden Brass | B075003-BGB



D E W

Polished Nickel | B051582-14



## DUNE

Brushed Golden Brass | B074960-BGB | B074961-BGB



## EMBER

All Finishes | B056431-SN | B056431-BGB | B056431-MB



## FRINGE

All Finishes | B076559-SN | B076559-BGB | B076559-MB





## GRATA

All Finishes | B078768-SN | B078768-BGB | B078768-MB



## JUNZI

Satin Brass | B056655-04 | B056658-04 | B056659-04



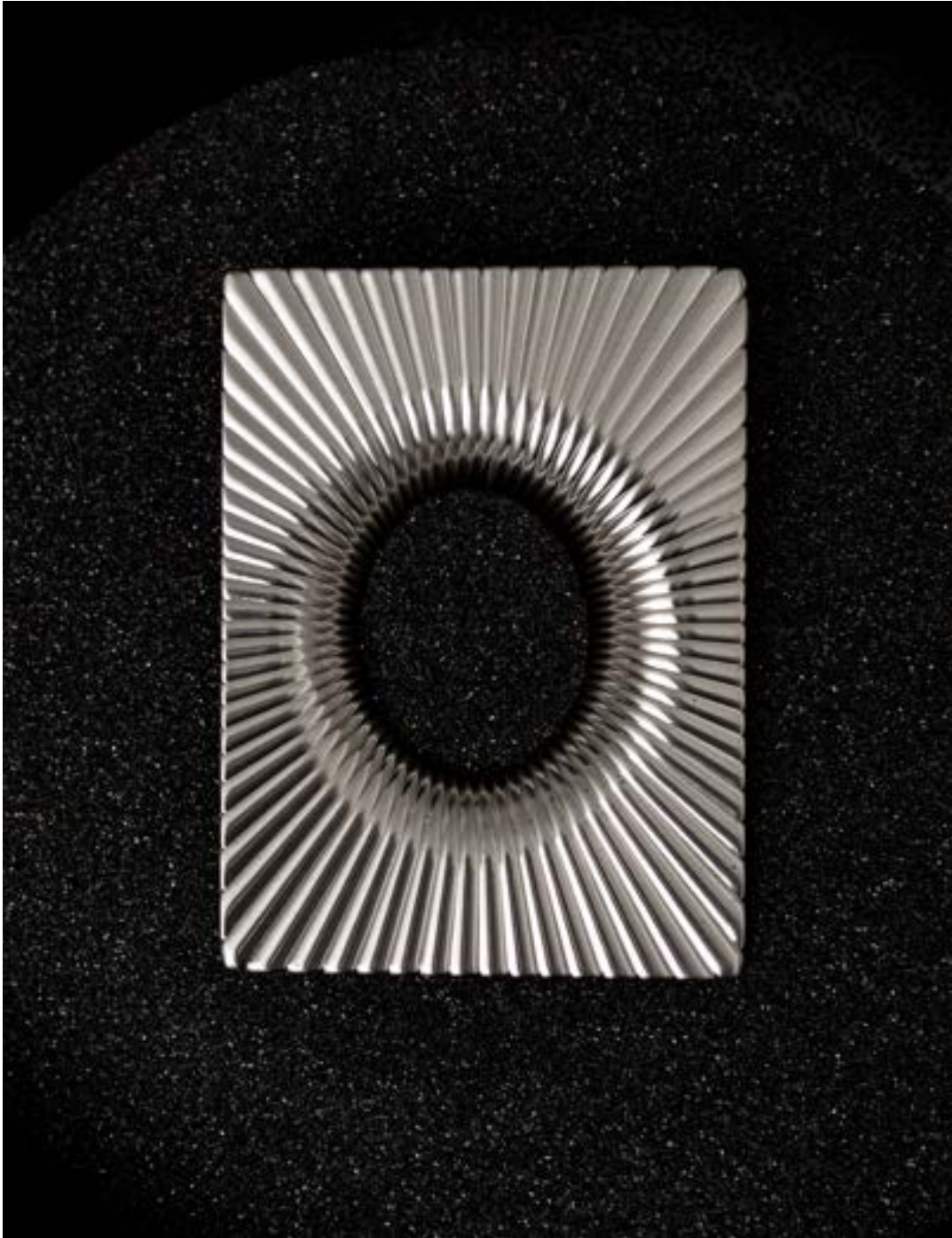
# LAUREL

Satin Nickel | B050038-SN



## LINEA

All Finishes | B056060-SN | B056060-BGB | B056060-MB



## LUMINESCENCE

Satin Nickel | B076105-SN



## MEANDROS

Brushed Golden Brass | B076346-BGB



# MINGLE

Matte Black | B076344-MB



## ODETTE

Brushed Golden Brass | B075393-BGB





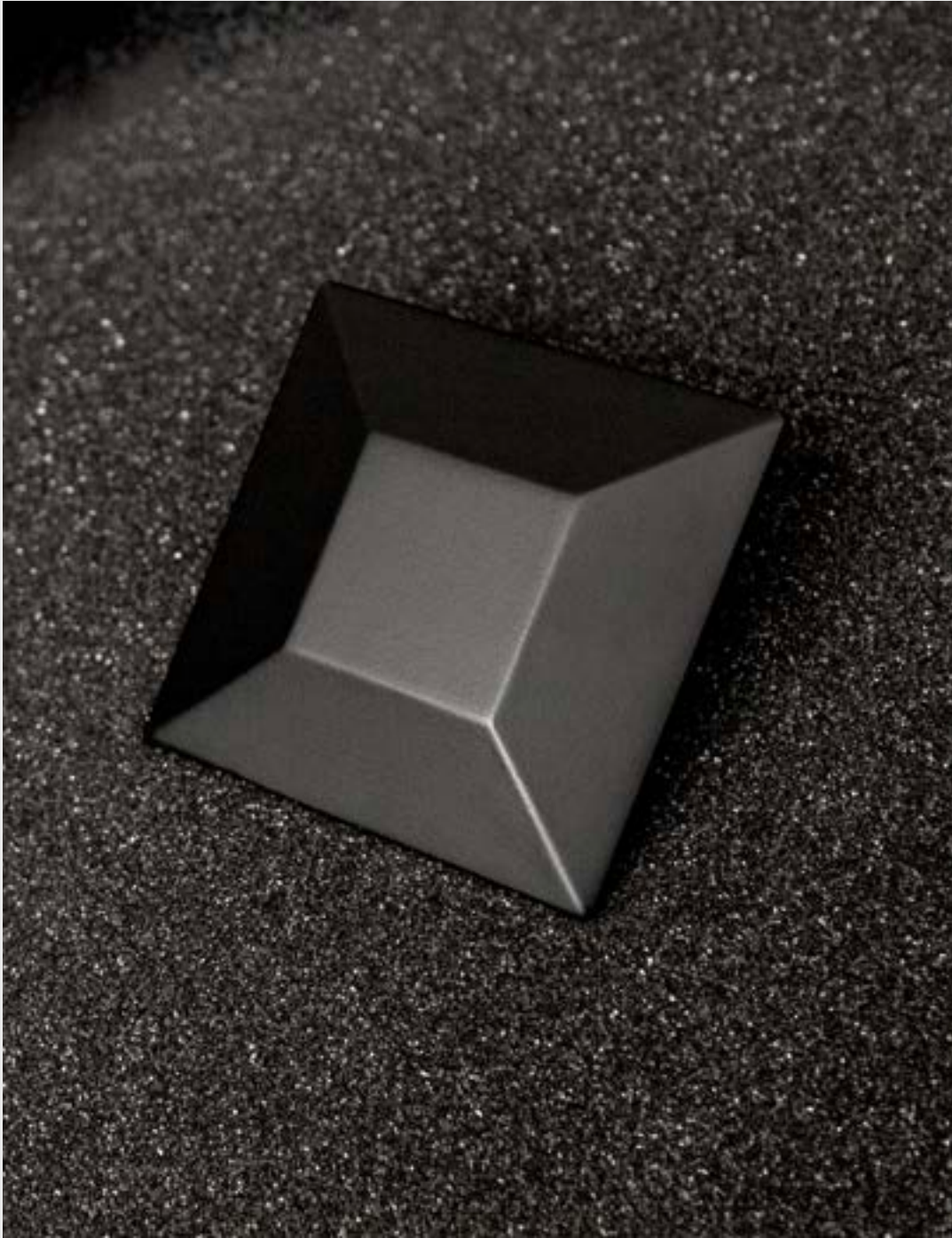
OMNI

Satin Nickel | B049825-SN



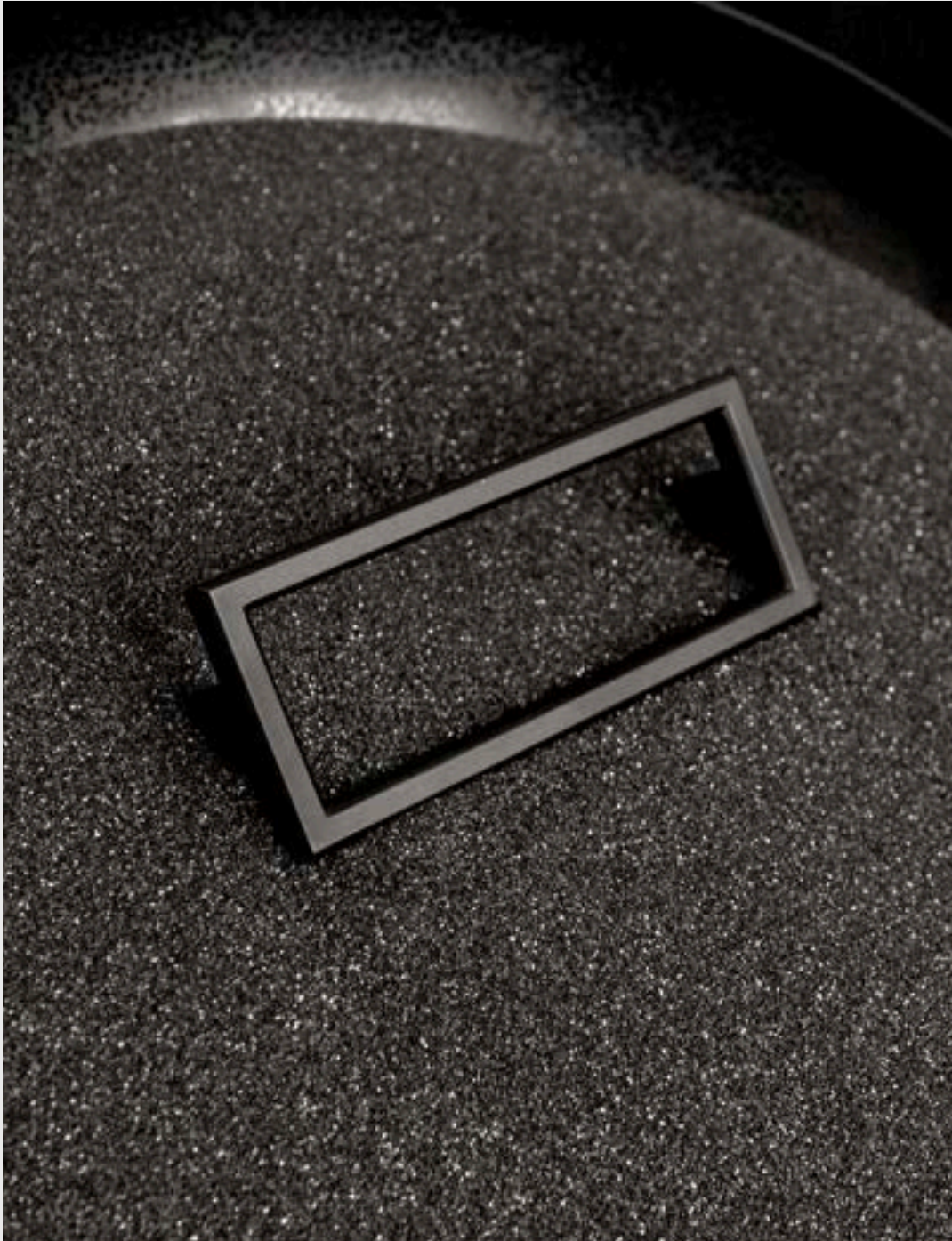
## PARAMOUNT

Tortoiseshell Acrylic with Brushed Golden Brass | B077011-TRBGB



POLLY

Matte Black | B076558-MB



## PRECEDENT

Matte Black | B076345-MB



## STESSO

Brushed Golden Brass | B074601-BGB



# SYBIL

Matte Black | B076986-MB



## TEMPEST

Brushed Golden Brass | B057801-BGB

# Index

ITEM NO.	PAGE	ITEM NO.	PAGE	ITEM NO.	PAGE	ITEM NO.	PAGE
<b>Akoya</b>	6-7	B074960-SN		<b>Luminescence</b>	38-41	<b>Precedent</b>	54-55
B052692-SN		B074961-14		B076104-SN		B076345-SN	
B052692-BGB		B074961-BGB		B076104-BGB		B076345-BGB	
B052692-MB		B074961-MB		B076104-MB		B076345-MB	
		B074961-SN		B076105-SN		<b>Stesso</b>	56-57
<b>Astoria</b>	8-11	<b>Ember</b>	26-27	B076105-BGB		B074601-SN	
B056379-SN		B056428-SN		B076105-MB		B074601-BGB	
B056379-BGB		B056428-BGB		<b>Meandros</b>	42-43	B074601-MB	
B056379-MB		B056428-MB		B076346-SN		<b>Sybil</b>	58-59
B056380-SN		B056431-SN		B076346-BGB		B076986-SN	
B056380-BGB		B056431-BGB		B076346-MB		B076986-BGB	
B056380-MB		<b>Fringe</b>	28-29	<b>Mingle</b>	44-45	B076986-MB	
B056405-SN		B076559-SN		B076344-SN		<b>Tempest</b>	60-61
B056405-BGB		B076559-BGB		B076344-BGB		B057801-SN	
B056405-MB		B076559-MB		<b>Odette</b>	46-47	B057801-BGB	
B056407-SN		<b>Grata</b>	30-31	B075393-SN		B057801-MB	
B056407-BGB		B078768-SN		B075393-BGB			
B056407-MB		B078768-BGB		B075393-MB			
<b>Aura</b>	12-13	B078768-MB		<b>Omni</b>	48-49		
B075512-14		<b>Junzi</b>	32-33	B049825-SN			
B075512-BGB		B056655-04		B049825-BGB			
B075512-MB		B056656-04		B049825-MB			
B075512-SN		B056657-04		<b>Paramount</b>	50-51		
<b>Bijou X</b>	14-15	B056658-04		B077011-CASN			
B079063-SN		B056659-04		B077011-CABGB			
B079063-BGB		<b>Laurel</b>	34-35	B077011-CAMB			
B079063-MB		B050038-SN		B077011-CAMB			
<b>Cinch</b>	16-17	B050038-BGB		B077011-BASN			
B075003-SN		B050038-MB		B077011-TRBGB			
B075003-BGB		<b>Linea</b>	36-37	<b>Polly</b>	52-53		
B075003-MB		B056013-SN		B076558-SN			
<b>Dew</b>	18-19	B056013-BGB		B076558-BGB			
B051582-14		B056013-MB		B076558-MB			
B051582-BGB		B056060-SN					
B051582-MB		B056060-BGB					
B051582-SN		B056060-MB					
<b>Dunc</b>	20-25						
B074960-14							
B074960-BGB							
B074960-MB							





---

**CONTACT US**

3100 Broadway SW  
Grandville, MI 49418

Phone: 1.877.556.2918  
Fax: 1.800.858.2119

[belwithkeeler.com](http://belwithkeeler.com)

**DISCLAIMER**

The information in this catalog is based on the latest product information available at the time of printing.

The right to discontinue items without advance notice and to make changes as to color, materials and other specifications at any time is reserved. Call 1.877.556.2918 for latest product availability.