



**FIRE**  
GARDEN

Fire Pit Burners, Complete  
Fire Pits, Outdoor Fireplaces,  
and Tempest Torches

IT'S ALL ABOUT THE FIRE



## IT'S ALL ABOUT THE FIRE

Fire Garden's new Fire Pit Burners, Complete Fire Pits, Fireplaces, and Tempest Gas Torches feature the most incredible, alluring presentations of fire you've ever seen! Designed to create the ultimate warmth and outdoor gathering space for any occasion, Fire Garden's mesmerizing flames will bring the magic to 'The Great Outdoors.'

### Fire Garden's Family of Fire Features

#### Linear Fire Pit Burners - Pages 6-7

Customizable, contemporary fire pit burners that are ready-to-finish with the materials and enclosure of your choice. Available in various lengths to suit your patio dimensions and style preferences.



#### Voracious Fire™ Round or Square Fire Pit Burners - Pages 8-9

Customizable, traditional burners that are ready-to-finish into the fire pit application of your choice. Available in round or square burner shapes in a variety of sizes to complement any outdoor gathering space.



#### Linear Complete Fire Pits - Pages 10-11

Fully-assembled fire pits that combine the Linear Fire Pit Burner with a surrounding enclosure. These models come ready to enjoy and simply need to be hooked up to your gas line and electrical.



*Cover photo features the 6424 Single-Sided Linear Fireplace and 20K BTU Tempest Lantern*

# Fire Garden's Family of Fire Features

## Linear Fireplaces - Pages 12-15

The 4024 and 6424 Linear Fireplaces are available in Single-Sided or See-Thru models. These sleek fireplaces offer a ready-to-finish enclosed design that adds a touch of grandeur to your outdoor living space.



## Traditional Fireplace - Pages 16-17

The 4035 Traditional Fireplace is ready-to-finish with custom materials and surround of your choice. Offering the look and ambiance of a traditional fireplace, the 4035 can be personalized with one of three designer log sets.



## Tempest Torches & Tempest Lantern - Pages 18-21

Tempest outdoor gas lamps are perfect for adding an inviting ambiance to your entryways, walk ways, patios, and pool areas.



## Prism™ Custom Fire Sculptures - Pages 22-23

The epitome of luxury outdoor gas fire art. Inspired by the enchanting beauty of firelight, these captivating sculptures combine black glass or weathering steel (Corten) cubes to create mesmerizing and magical fire reflections.





## ALL-WEATHER CONSTRUCTION & PERFORMANCE

IT'S ALL ABOUT THE FIRE

Featuring heavy-duty stainless steel construction and tempered glass wind guards, Fire Garden™ Fire Pit Burners, Complete Fire Pits, and Fireplaces are perfect for all-weather installation.

These weather-proof units do not require protective covers. They are engineered to be enjoyed in all weather conditions, year-round.

All-Weather 24V Hot Shot™ Electronic Ignition is the most robust and reliable ignition system offered in the industry. This is the same proven system that has been featured on our Tempest Torches for over a decade. You are able to control up to six Fire Garden™ units, including Tempest Torches or Lanterns, with a single switch.



Above: A closer look at the heavy-duty stainless steel construction of our Linear Fire Pit Burner



Above: The All-Weather 24V Hot Shot™ Electronic Ignition system is featured on all Fire Garden™ models. Shown here on the Voracious Fire™ Pit Burner

## ENGINEERED FOR YEARS TO COME

We've engineered our burners to stand the test of time and year-round weather conditions with our strategically placed pre-valve weep port. This allows for exceptional drainage, eliminating potential environmental damage from water and ice.

These burners are resistant to corrosion, heat, and weather elements, ensuring long-lasting performance and peace of mind. With proper care and maintenance, you can enjoy the beauty and warmth of all Fire Garden units for years to come.



All fire pit burners feature our integrated pre-valve weep port

## FIRE GARDEN PRODUCT FEATURES

- Bold, beautiful flame
- Stainless steel burners
- Durable All-Weather construction
- Reliable All-Weather 24V Hot Shot™ Electronic Ignition
- 3/8" thick tempered glass wind guard with chrome hardware (not included with Voracious Fire™ and Tempest models)
- Optional 24V transformer
- Standard air vents when applicable
- Key valve kit included (not with Tempest models)
- Safety gas shut off
- Strategically placed pre-valve weep port eliminates potential damage from water and ice.
- LP conversion kit
- No protective covers required



IT'S ALL ABOUT THE FIRE

## Entertaining comes alive when you're gathered around our Linear Fire Pit Burner.

Crafted from premium materials, our Linear Fire Pit Burners come ready-to-finish with the materials and enclosure of your choice, allowing you to customize the appearance to complement your outdoor decor seamlessly. The linear eye-catching ribbon of flame will undoubtedly become the centerpiece of your outdoor entertainment area. Burners come ready to hard pipe to Natural Gas and feature two standard air vents.



*This patio features the 60" Linear Fire Pit Burner custom finished with concrete blocks.*

# Linear Fire Pit Burners



WATCH ME  
BURN

36" BURNER  
65K BTU/Hr  
36" x 12" x 10-1/4"



96" BURNER  
185K BTU/Hr  
96" x 12" x 10-1/4"



60" BURNER  
120K BTU/Hr  
60" x 12" x 10-1/4"



120" BURNER  
240K BTU/Hr  
120" x 12" x 10-1/4"



## Media Options



PLATINUM  
CRUSHED GLASS



BRONZE  
CRUSHED GLASS



COBALT  
CRUSHED GLASS



BLACK  
CRUSHED GLASS



TUMBLER STONES



IT'S ALL ABOUT THE FIRE

## The alluring flames in our Voracious Fire™ Pit Burner create the perfect centerpiece for outdoor gatherings.

These customizable burners provide a captivating presentation of fire that is sure to become the focal point of your outdoor space. Whether you opt for a round or square design, the Voracious Fire™ Pit Burners offer versatility and can be easily integrated into any outdoor setting.



*This 32" Round Voracious Fire™ Pit Burner is installed into a custom stone surround*



# Voracious Fire™ Pit Burners

Select your burner size and shape, then finish with the materials of your choice. Custom plate sizes are available. Requires hard-piped gas line and low voltage 24V power.



WATCH ME  
BURN

## Burners on Round Plates



**10" Burner**  
**25" Plate**  
65K BTUs



**13" Burner**  
**28" Plate**  
125K BTUs



**18" Burner**  
**33" Plate**  
175K BTUs

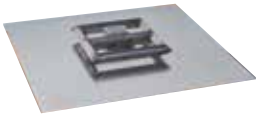


**22" Burner**  
**37" Plate**  
225K BTUs



**32" Burner**  
**47" Plate**  
350K BTUs

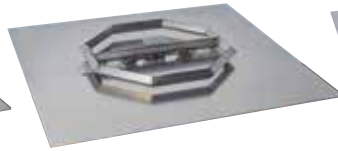
## Burners on Square Plates



**10" Burner**  
**25" Plate**  
65K BTUs



**13" Burner**  
**28" Plate**  
125K BTUs



**18" Burner**  
**33" Plate**  
175K BTUs

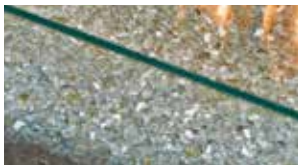


**22" Burner**  
**37" Plate**  
225K BTUs



**32" Burner**  
**47" Plate**  
350K BTUs

## Media Options



**PLATINUM**  
**CRUSHED GLASS**



**BRONZE**  
**CRUSHED GLASS**



**COBALT**  
**CRUSHED GLASS**



**BLACK**  
**CRUSHED GLASS**



**TUMBLED STONES**



IT'S ALL ABOUT THE FIRE

## Take outdoor movie night to the next level with the warm glow and ambiance of a Linear Complete Fire Pit.

If you're looking for a fully-assembled, hassle-free outdoor fire feature, our Linear Complete Fire Pits are the perfect solution. These ready-to-install fire pits combine the Linear Fire Pit Burner with a surrounding enclosure in your choice of Graphite Powder Coat or Weathering Steel (Corten) finishes.



*This backyard features the 72" Complete Fire Pit with Weathering Steel enclosure.*

# Linear Complete Fire Pits



48" FIRE PIT  
65,000 BTUs  
48" L x 24" W x 16" H



72" FIRE PIT  
120,000 BTUs  
72" L x 24" W x 16" H



108" FIRE PIT  
185,000 BTUs  
108" L x 24" W x 16" H



132" FIRE PIT  
240,000 BTUs  
132" L x 24" W x 16" H



132" FIRE PIT AVAILABLE FOR CUSTOM  
ORDER ONLY

## Media Options



PLATINUM  
CRUSHED GLASS



BRONZE  
CRUSHED GLASS



COBALT  
CRUSHED GLASS



BLACK  
CRUSHED GLASS



TUMBLER STONES

### WEATHERING STEEL



Often called Corten (Cor-Ten), is a group of steel alloys which were developed to eliminate the need for painting and form a stable, rust-like appearance after several years of exposure to weather.



IT'S ALL ABOUT THE FIRE

## Entertaining under the magic of the evening sky is even better with the 4024 Linear Fireplace.

Available in Single-Sided or See-Thru models, the 4024 fireplaces offer a ready-to-finish enclosed design that adds a touch of grandeur to your outdoor living space. Enjoy the warmth and ambiance of a relaxing fire while appreciating the sleek and modern aesthetics of your custom-finished fireplace structure.



*This terrace features the 4024 Single-Sided Linear Fireplace finished with custom stonework.*



WATCH ME  
BURN

## 4024 Linear Fireplaces

- Dimensions: 42" W x 19 5/8" D x 43 3/4" H
- 65,000 BTUs/Hr.
- Black Glass Fireback

- Viewing Area:  
Single-Sided: 40" W x 24" H = 960 Sq. In.  
See-Thru: 40" W x 24" H x 2 = 1,920 Sq. In.



4024 Single-Sided



4024 See-Thru

### Media Options



PLATINUM  
CRUSHED GLASS



BRONZE  
CRUSHED GLASS



COBALT  
CRUSHED GLASS



BLACK  
CRUSHED GLASS



TUMBLED STONES



## Stunning views are no match for the draw of a dancing fire in the 6424 Linear Fireplace.

Available in Single-Sided or See-Thru models, these contemporary fireplaces offer a ready-to-finish enclosed design that adds drama and beauty to your outdoor living space. Representing Fire Garden's largest linear fireplace, the 6424 is perfect for those wanting to make a bold statement in grand outdoor spaces.



*This 6424 Single-Sided Linear Fireplace is installed in The New American Home® 2023. It is finished with a custom pre-fabricated metal surround.*

# 6424 Linear Fireplaces



WATCH ME  
BURN

- Dimensions: 66" W x 19-5/8" D x 43-3/4" H
- 120,000 BTUs/Hr.
- Black Glass Fireback

- Viewing Area:  
Single-Sided: 64" W x 24" H = 1,536 Sq. In.  
See-Thru: 64" W x 24" H x 2 = 3,072 Sq. In.



6424 Single-Sided



6424 See-Thru

## Media Options



PLATINUM  
CRUSHED GLASS



BRONZE  
CRUSHED GLASS



COBALT  
CRUSHED GLASS



BLACK  
CRUSHED GLASS



TUMBLED STONES



## Golden hour memories are made when paired with a view of the 4035 Traditional Fireplace.

This timeless fireplace brings the charm of a traditional indoor hearth to the great outdoors, creating a cozy ambiance for gatherings with family and friends. The 4035 is the perfect addition to your outdoor entertainment space, allowing you to bask in warmth and comfort all year-round.



*This gorgeous balcony features the 4035 Traditional Fireplace shown with the Birch Log Set and Black Glass Fireback.*



# 4035 Traditional Fireplace



WATCH ME  
BURN

- Single-Sided model
- 90,000 BTUs/Hr.
- Black Glass Fireback
- Dimensions: 47" H x 46 7/16" W x 19 5/8" D
- Viewing Area: 40" W x 35" T = 1,400 Sq. In.



## Log Set Options



Oak Log Set



Birch Log Set



Bon-Fyre™ Birch Log Set



**FIRE**  
**GARDEN**

## 20K BTU Tempest Torch™

A stunning and innovative addition to your outdoor lighting collection, the Tempest Torch goes above and beyond traditional gas torch design, offering a dramatic and captivating visual experience.

- Beautiful spiraling flame due to patented design creates a natural venturi effect of fire without the use of electricity or a fan
- Transitional stainless steel design complements all hardscape styles
- Choice of All-Weather 24V Hot Shot™ Electronic Ignition or Manual Piezo Ignition
- BTUs: 20,000 (NG/LP)
- Can be installed in four different ways: Ground Post, Deck Post, Pillar Mount, or Wall Mount



WATCH ME  
BURN

## 20K BTU Tempest Lantern™

The Tempest Lantern combines timeless elegance with modern functionality. This dramatic gas lantern boasts a classic, traditional style that will enhance the ambiance and charm of any outdoor setting.

- Beautiful spiraling flame due to patented design creates a natural venturi effect of fire without the use of electricity or a fan
- Traditional lantern design with high temperature black powder coated frame and cap
- Choice of All-Weather 24V Hot Shot™ Electronic Ignition or Manual Piezo Ignition
- BTUs: 20,000 (NG/LP)
- Can be installed in four different ways: Ground Post, Deck Post, Pillar Mount, or Wall Mount





**FIRE**  
**GARDEN**

IT'S ALL ABOUT THE FIRE

## 50K BTU Tempest Lantern™

This larger-than-life gas lantern is known for its stunning presentation of fire and massive size. Designed to create a captivating ambiance and add drama to outdoor spaces, this lantern features a powerful gas flame that is both functional and visually appealing.



- Massive natural spiraling flame is 40% larger than the 20K Tempest Lantern
- Traditional lantern design on a grand scale
- Durable stainless steel construction with high temperature black powder coated frame and cap
- All-Weather 24V Hot Shot™ Electronic Ignition
- Maximum BTU Input: 50,000 (NG), 45,000 (LP)
- Can be installed in four different ways: Ground Post, Deck Post, Pillar Mount, or Wall Mount





**FIRE**  
GARDEN

IT'S ALL ABOUT THE FIRE





**Ensclosed by 65 million year old basalt pillars, this Grand Cluster arrangement of Prism™ Cubes glows brilliantly with flames and reflections.**



## **Prism™ Custom Fire Sculptures**

Inspired by the enchanting beauty of firelight, these captivating sculptures feature black glass cubes or weathering steel (Corten) to create mesmerizing and magical reflections of fire in a way you've never seen before. Designed to ignite wonder in your favorite outdoor space, these exquisite fire sculptures redefine the art of outdoor ambiance.

Each 65K BTU cube emits a bold, dancing flame. Thoughtfully and elegantly composed collections of multiple cubes are available, or you can create your own custom sculpture arrangement.

Pictured to the left, the Grand Cluster is our largest composed collection, featuring all four heights of individual Prism™ cubes: 12", 18", 24" and 30" tall cubes.

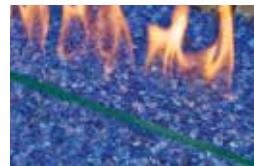
## **Media Options**



**PLATINUM  
CRUSHED  
GLASS**



**BRONZE  
CRUSHED  
GLASS**



**COBALT  
CRUSHED  
GLASS**



**BLACK  
CRUSHED  
GLASS**



**TUMBLED  
STONES**



Manufactured in Mukilteo, WA  
By Travis Industries, Inc

Find your favorite fire today at [FireGardenOutdoors.com](https://FireGardenOutdoors.com)



Fire Garden™ manufactures a wide variety of quality outdoor gas appliances. Consult the Owner's Manual for complete installation requirements. We reserve the right to improve our product at any time without prior notification. Photos and illustrations are for descriptive purposes only. Copyright © 09/2023 #98801065